

Research Career Development - Featuring highlights of the local menu of programs and resources available to you!

9/20/2021

Representatives from:

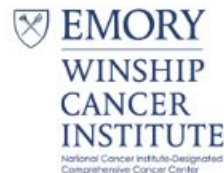
Emory School of Medicine, Depts of Medicine & Pediatrics,
CFAR, Winship, the Georgia CTSA

K-Club

Sponsored by:



Department of Pediatrics



Department of Medicine

Survey Drawing



The University of Utah Grant Writing Coaching Groups Study

<https://nrmnet.net/university-of-utah-nrmn-u01/>

- Intensive group coaching model for investigators who are actively writing, or poised to begin writing, a research grant application.
- The study compares variations of the group coaching intervention to identify features that influence its effectiveness.
- Who should apply: Currently recruiting for Cohort 5
 - Must be a postdoctoral associate or research-intensive junior faculty/new investigators who are seeking to develop a competitive NIH-style research grant proposal
 - Must be targeting an NIH submission deadline of May – September 2022 (preferred) or October – December 2022
 - **Due date for applying to Cohort 5: September 27, 2021**

Funded by the NIH Common Fund via U01 GM132366; administered by the NIGMS

Evidenced based practice

The Proposal Preparation Program: A Group Mentoring, Faculty Development Model to Facilitate the Submission and Funding of NIH Grant Applications

- <https://pubmed.ncbi.nlm.nih.gov/34380935/>
- Article providing evidence that there are advantages to participate in a mentored proposal preparation program
- The estimated rate at which participants obtained funding (~35%) exceeds the national annual NIH grant funding rates (~20%) by approximately 50%.

Today's presentation

School of Medicine Resources

- Kathy Griendling, Joshua Levy

Georgia CTSA Resources

- Andrew West
- Kathy Griendling

Scientific Core Resources

- Emory Integrated Core Facilities (Rich Johnston)
- Pediatric focused cores (Stacy Heilman)
- Winship cores (Adam Marcus)

Institutional K Grants

- Winship K12 Clinical Oncology Training Program (Kavita Dhodapkar)
- Building Interdisciplinary Research Careers in Women's Health (BIRCWH) (Vas Michopoulos)
- Georgia CTSA KL2 (Vas Michopoulos)
- Atlanta Pediatrics Scholars Program (Stacy Heilman)

Other funding mechanisms suitable for junior faculty

- Winship funding (Larry Boise)
- SCORE and CFAR funding (Kimbi Hagen)
- Pediatrics specific funding (Stacy Heilman)

Grant writing and grant editing support

- Grantwise (Griendling)
- Pediatrics Grant Editing and Manuscript Support (Stacy Heilman)
- Georgia K Advance (Vas Michopoulos)
- Emory Office of Postdoctoral Education ((Lydia Soleil); *Stacy Heilman filling in*)

Other/misc

- DOM sponsored programs (Kathy Griendling)
- DOP sponsored programs (Stacy Heilman)

Today's presentation

- 1. School of Medicine Resources**
- 2. Georgia CTSA Resources**
- 3. Scientific Core Resources**
- 4. Institutional K Grants**
- 5. Other funding mechanisms suitable for junior faculty**
- 6. Grant writing and grant editing support**
- 7. Other/misc**

SOM Program – Kathy Griending



Jr Faculty Development Course

- Designed to help junior faculty acquire the skills they need for academic success
- Offered annually from Jan to May; 11 three-hour sessions every other week on Thursday evenings
- Class size limited to 30; application period in the fall
- Covers personal styles, the organization and its finances, human resource skills, teaching, grant and manuscript writing, presentation skills, promotions, negotiation, ethics and leadership

Research Support Programs

- Speed Networking (the Gong Show) held annually in the fall
- Health Services Research Symposium (5/4/2022)
 - highlights emerging health services research at Emory
 - Keynote speaker, invited talks, poster sessions



Learn. Connect. Collaborate.

Research Support Programs

- Clinical Research Bootcamp 101, 201, 301
 - Three-year series of annual one-day programs focused on introduction to clinical research skills and Emory resources
 - Workshop becomes more in depth each year, focusing on study design and statistics
 - Held annually in the spring (301 version in spring, 2022)

Researcher Survival Skills

Quarterly workshops designed to provide researchers with traditional skills such as manuscript and grant writing, but also soft skills such as lab/research team management, people skills, navigating research administration, financial management, conflict and negotiation, and other topics not covered in professional school.

- Full schedule [here](#)
- **November 15:**
SBIR/STTR Grant
Workshop



Researcher Survival Skills

PROFESSIONAL & LEADERSHIP DEVELOPMENT

SBIR/STTR Grant Workshop

Tuesday, November 16
2 – 4 PM
[Register](#)

Looking for startup funding? Thinking about an SBIR or STTR? Come learn from experienced academic investigators how to craft a well written proposal. We will cover the basics of the SBIR and STTR, how these grants are *different* from a typical R01, commercialization plans, submission and review process, and finally some pearls of wisdom from previous award winners.

Presented by Georgia CTSA and Emory University School of Medicine

 Georgia CTSA
Georgia Clinical & Translational Science Alliance

Manuscript Mentoring Program

Manuscript Mentoring Program

This program matches junior faculty members who are working on a manuscript with experienced faculty who can provide the needed guidance and mentoring for successful publication. Junior faculty members should submit a request to be paired with a mentor.

“ [My mentor's] experience is most valuable as I had no clue how to begin the task. She is supportive when emphasizing my strengths, and is constructive when pointing out weaknesses.”

“This program is a really great opportunity to meet with senior researchers and get real time feedback.” ”

- Matches faculty with senior experienced mentors to work on any aspect of manuscript preparation
- Can be collaborative or consultative
- Sign up on the Faculty Development Website or in the Weekly Huddle newsletter

Today's presentation

- 1. School of Medicine Resources**
- 2. Georgia CTSA Resources**
- 3. Scientific Core Resources**
- 4. Institutional K Grants**
- 5. Other funding mechanisms suitable for junior faculty**
- 6. Grant writing and grant editing support**
- 7. Other/misc**

Georgia CTSA K Club Presentation

Monday, September 20, 2021

Andrew C. West

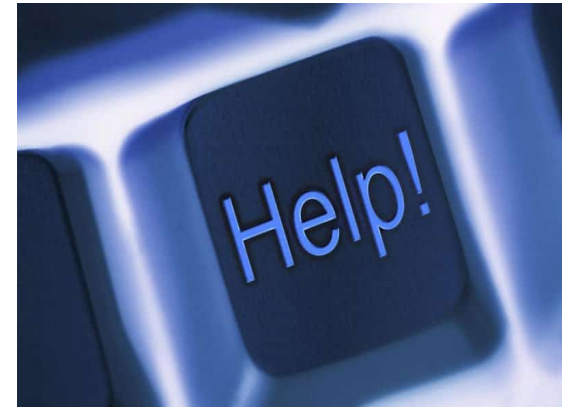
Senior Center Administrator

Georgia CTSA Broad Initiatives

1. Education
2. Collaboration & Coordination
3. Clinical Research Support
4. Community Engagement
5. Regulatory Knowledge & Quality
6. Expert Assistance
7. Translation Support

Where to start

- Georgia CTSA Coordinating Center
- <https://georgiactsa.org/research/regulatory-knowledge-support/coordinating-center.html>
- Karen A. Lindsley, DNP, RN, CDE, CCRC
- 404-727-1098
- klindsl@emory.edu



Weekly eRoundup Newsletter

2,962 subscribers

eRoundups



SEPTEMBER 10, 2021

'What's Your Why?' Georgia CEAL Ad Campaign to Reduce COVID-19 Vaccine Hesitancy



SEPTEMBER 3, 2021

Blue Sky Group: Single Cell Technologies and Analytics



AUGUST 27, 2021

Inclusive Excellence: Linking Workforce Diversity and Health Equity Goals



AUGUST 20, 2021

Bench2Market Talks - From University Innovation to Commercialization



AUGUST 13, 2021

Georgia CTSA UL1 Diversity Scholar Tackles the Maternal Mortality Crisis



AUGUST 6, 2021

Welcome Georgia CTSA 2021-2022 KL2 Scholars

Georgia CTSA

- Highlighting Georgia CTSA resources of potential special interest



Georgia CTSA



Groups

- **Purpose:** to bring together groups of people with common research interests and increase collaboration across the DOM
- First meeting: 10-30 people who don't normally interact meet for 90 minutes for open discussion of a theme
- Second meeting: organized with current and new invitees to explore outcome in depth—might include short presentations
- Third and subsequent meetings if group desires

If you are interested in starting
a new group, please contact
Lauren.James@emory.edu

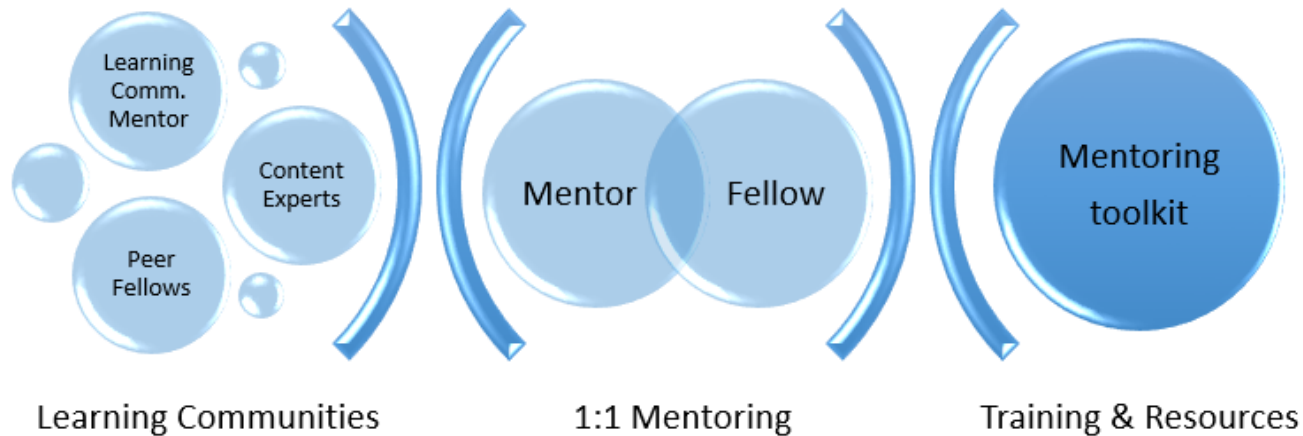
Upcoming Georgia CTSA Team Science Workshops

- “Crash Course” on Team Science (August 27th, January 28th)
 - Chris Wiese, Georgia Tech
- Managing Virtual Teams (September 17th)
 - Lucy Gilson, University of Connecticut
- Multiteam Systems (October 15th)
 - Marissa Shuffler, Clemson University
- Facilitating Collaboration in Interdisciplinary Teams (November 19th)
 - Maritza Salazar Campo, University of California Irvine
- Diversity and Representation in Teams (March 11th)
 - Bertolt Meyer, Chemnitz University of Technology
- Team Leadership and Motivation (April 8th)
 - C. Shawn Burke, University of Central Florida

Georgia CTSA TEAMS Mentoring Program



Translational Education and Mentoring in Science



Today's presentation

- 1. School of Medicine Resources**
- 2. Georgia CTSA Resources**
- 3. Scientific Core Resources**
- 4. Institutional K Grants**
- 5. Other funding mechanisms suitable for junior faculty**
- 6. Grant writing and grant editing support**
- 7. Other/misc**

Today's presentation

3. Scientific Core Resources

- Emory Integrated Core Facilities (Rich Johnston)
- Pediatric focused cores (Stacy Heilman)
- Winship cores (Adam Marcus)



EMORY INTEGRATED CORE FACILITIES

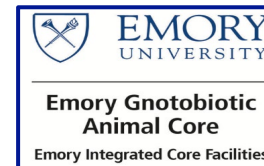
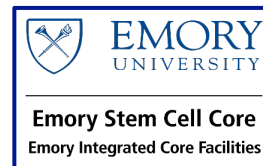
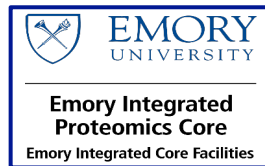
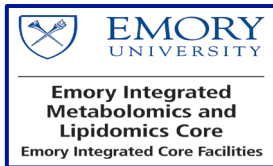
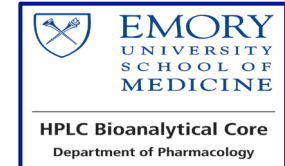
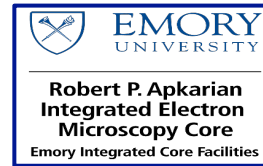
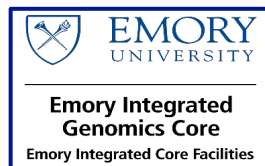
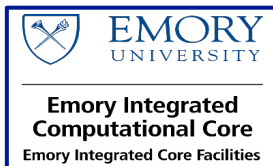
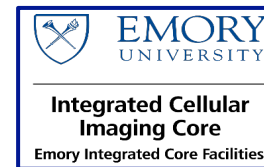
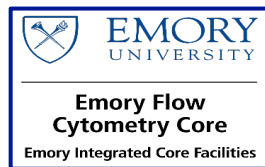
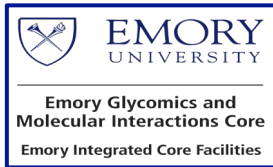
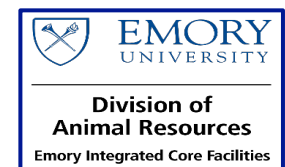
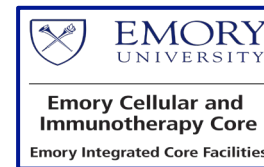
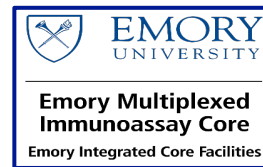
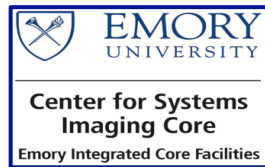
Rich Johnston, PhD
Core Director - EICC

EMORY INTEGRATED CORE FACILITIES

Our Integrated Core Facilities provide researchers with advanced tools and equipment paired with specialized expertise to advance multidisciplinary research excellence. Our services span from bench to publication.



EMORY INTEGRATED CORE FACILITIES




OTHER CORE FACILITIES AT EMORY




EMORY
UNIVERSITY
SCHOOL OF
MEDICINE

**Translational
Neuroscience Core**
Department of Neurosurgery




EMORY
UNIVERSITY
SCHOOL OF
MEDICINE

**Medical and Health
Informatics Core**
Department of
Biomedical Informatics




EMORY
UNIVERSITY
SCHOOL OF
MEDICINE

**Research Hemostasis
and Coagulation Core**
Department of Anesthesiology



EMORY
UNIVERSITY
SCHOOL OF
MEDICINE

**Investigational Clinical
Microbiology Core**
Department of Medicine



EMORY
UNIVERSITY
SCHOOL OF
MEDICINE

**Electronics and
Mechanical Core**
Department of Physiology



EMORY
WINSHIP
CANCER
INSTITUTE

A Cancer Center Designated by
the National Cancer Institute



Georgia CTSA
Georgia Clinical & Translational Science Alliance



EMORY
COLLEGE
OF ARTS AND
SCIENCES



Children's™
Healthcare of Atlanta



EMORY
LIBRARIES &
INFORMATION
TECHNOLOGY

GEORGIA CORE FACILITY PARTNERSHIP

Through the Georgia Research Alliance's Georgia Core Exchange website and database, investigators can access core facilities at **Georgia's eight largest research universities (>95 core facilities)**:

- Augusta University
- Clark Atlanta University
- Emory University
- Georgia Institute of Technology
- Georgia State University
- Mercer University
- Morehouse School of Medicine
- University of Georgia

CORE FACILITY EXPANSION IN HEALTH SCIENCES RESEARCH BUILDING (HSRB) - I I

10 of 19 integrated cores will expand to support investigators in HSRB-I I:

- Emory Integrated Computational Core
- Emory Integrated Metabolomics and Lipidomics Core
- Center for Systems Imagine Core
- Emory Flow Cytometry Core
- Emory Integrated Genomics Core
- Rodent Behavioral Core
- Integrated Cellular Imagine Core
- Mouse Transgenic and Gene Targeting Core
- Emory Gnotobiotic Animal Core
- Division of Animal Resources

Emory's first research building with core facilities integrated into the building design.

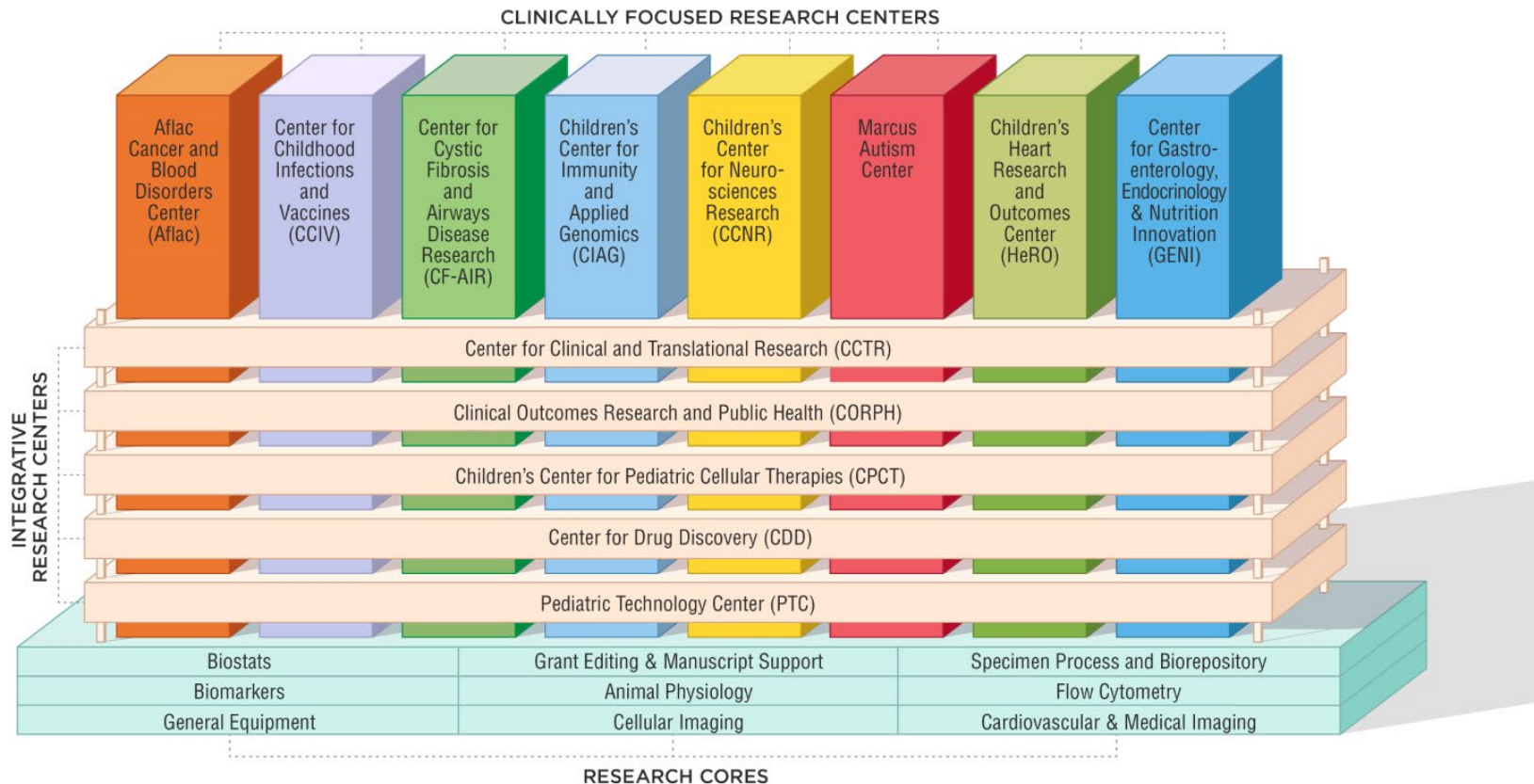


Pediatric Cores



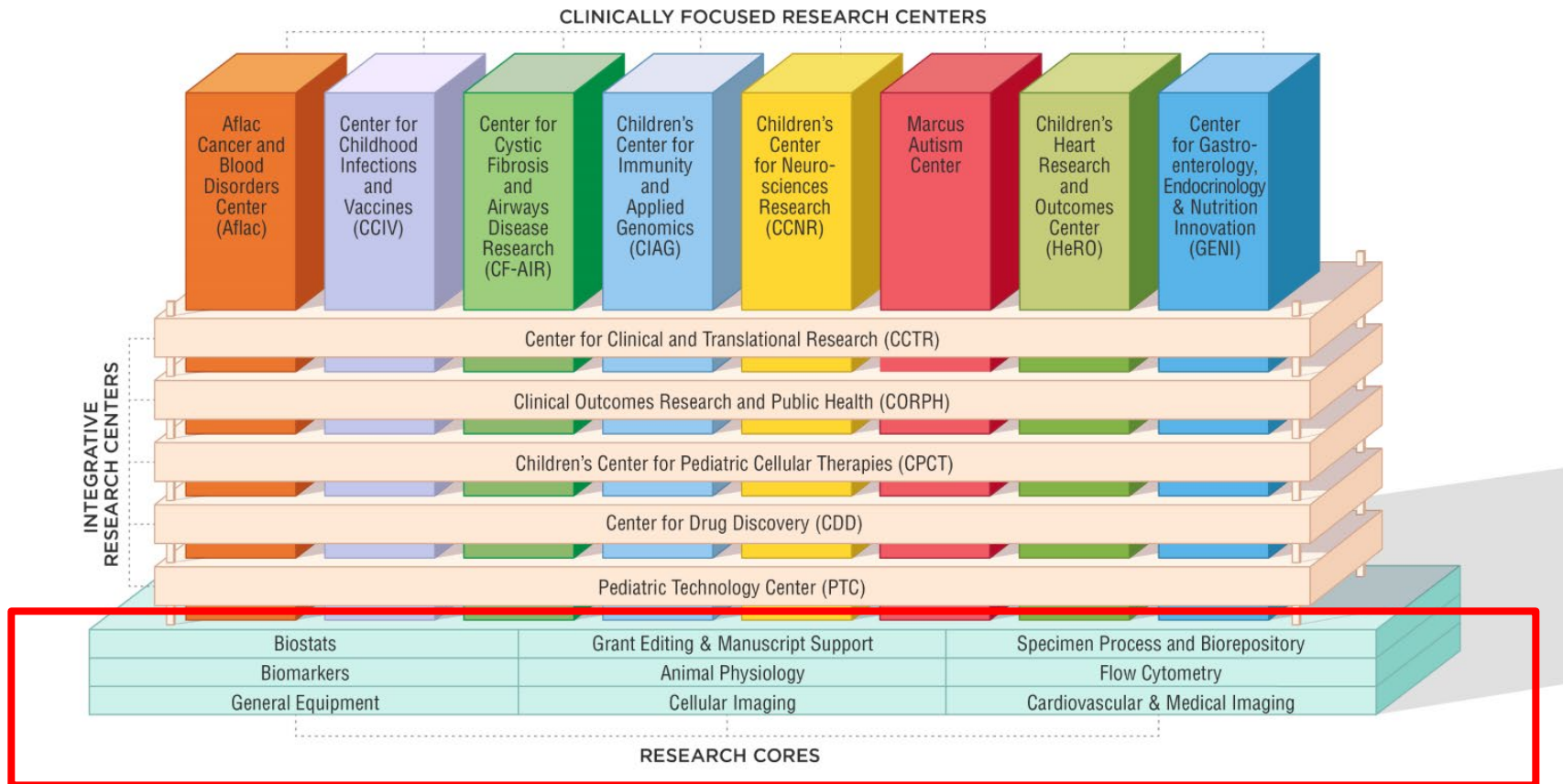
The Pediatric Research Ecosystem

EMORY + CHILDREN'S PEDIATRIC RESEARCH ECOSYSTEM



The Pediatric Research Ecosystem

EMORY + CHILDREN'S PEDIATRIC RESEARCH ECOSYSTEM



Pediatric Cores

<https://www.pedsresearch.org/research/cores/>



- **Fee for service cores that may be used by any researchers**

Child health researchers receive generous subsidies!

- Animal Physiology
- Biomarkers
- Clinical and Translational Discovery Core (biorepository and specimen processing)
- CF Discovery (CF specific biorepository)
- Flow Cytometry



- **Partnership Cores**
 - Pediatric Heart Disease Data Registry Core
 - Cellular Imaging (ICI)
 - Medical Imaging (CSI and Children's)
 - Cardiovascular Imaging (Children's)

Pediatric Cores

<https://www.pedsresearch.org/research/cores/>

- **Cores for exclusive use by those conducting child health related research**
 - Biostatistics
 - Grant Editing & Manuscript Support (GEMS)



Pediatric Cores

<https://www.pedsresearch.org/research/cores/>

- **Cores for exclusive use by those conducting child health related research**
 - Biostatistics
 - Grant Editing & Manuscript Support (GEMS)



Biostatistics Core

Subsidized support available

<https://www.pedsresearch.org/research/cores/biostatistics-core/overview/>

BIostatISTICS CORE (INCLUDES QUALITATIVE RESEARCH CORE)

Overview

Prioritization & Pricing

Request Support

Co-Authorship Guidelines

Resources

Qualitative Research Core

Services/Expertise offered

- Experimental Study Design
- Analysis for research abstracts/posters for scientific meetings
- Analysis for research publications
- Analysis for NIH grant and other research grant application submissions

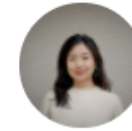
Overview

The Biostatistics Core provides assistance with analytics and statistical methodology for the design and preparation of studies, grant proposals, and manuscripts. Two PhD biostatisticians and several masters level biostatisticians are available to consult and provide expertise to meet pediatric researchers' data management and statistical analysis needs. (Please note that data entry assistance is not provided via this core.)

To access, please complete the [Biostatistics Request Form](#).



Key Contacts



Shasha Bai, PhD
shasha.bai@emory.edu
404-727-4113



Scott Gillespie, MS,
MSPH
scott.gillespie@emory.edu
404-727-4113, 404-785-6869



Michael Scott Kelleman,
MSPH
michael.kelleman@emory.edu
404-727-5882



Yijin Xiang, MPH
yijin.xiang@emory.edu



Anna Wood, MPH
anna.wood@emory.edu

Shared Resources Overview

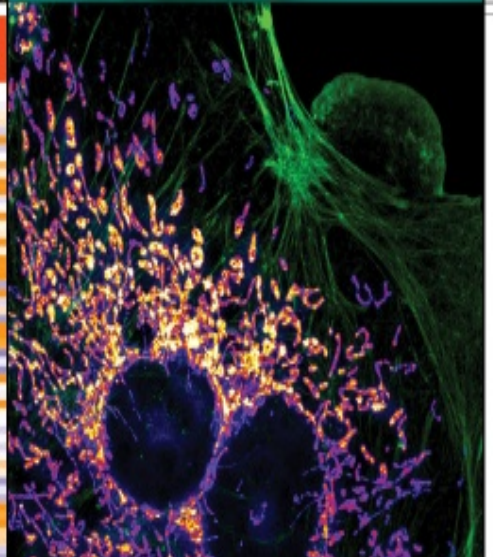
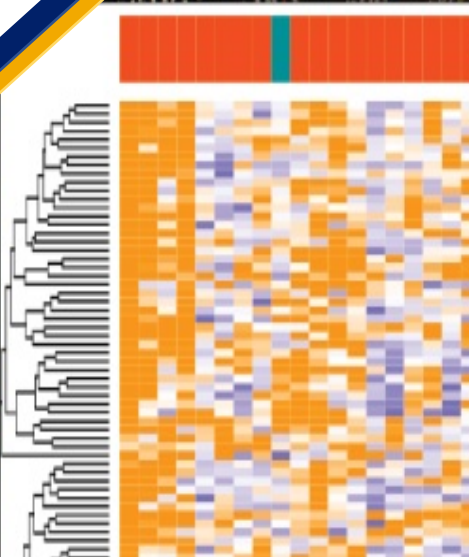
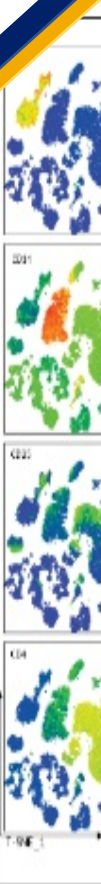
Adam Marcus, PhD

 **EMORY**
WINSHIP
CANCER
INSTITUTE

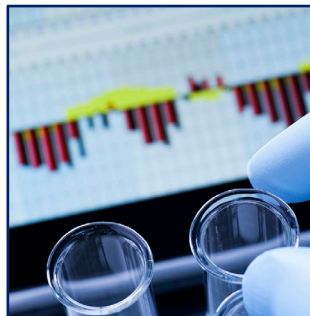
National Cancer Institute-Designated
Comprehensive Cancer Center

NCI Comprehensive
Cancer Center

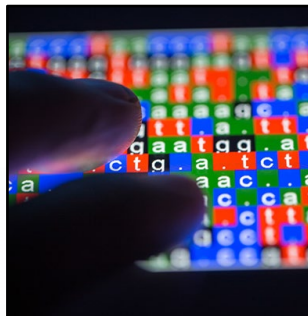
A Cancer Center Designated by the
National Cancer Institute



Winship Shared Resources



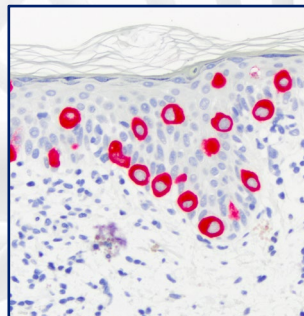
Biostatistics



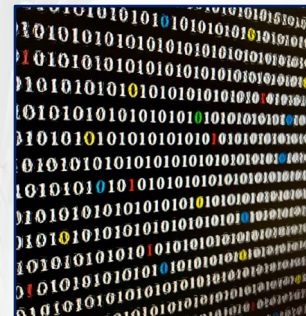
Bioinformatics & Systems Biology



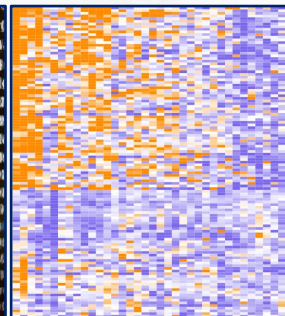
Cancer Animal Models



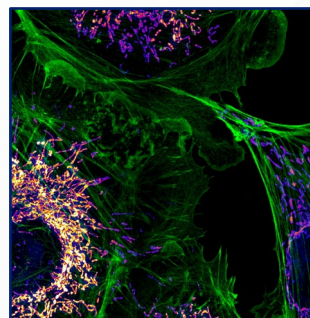
Cancer Tissue & Pathology



Research Informatics Data & Technology Applications (DATA)



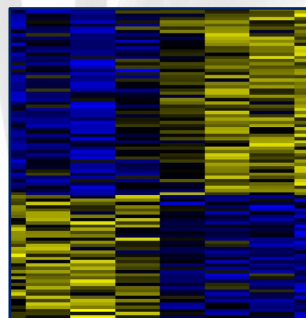
Genomics *



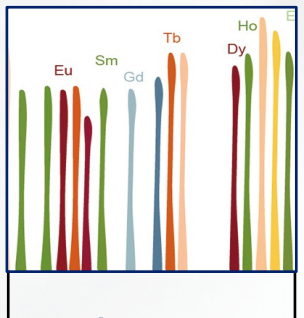
Imaging *



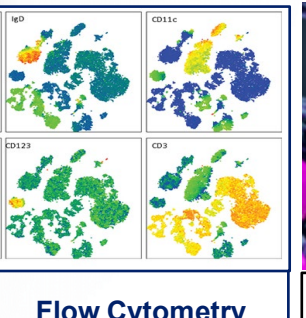
IDDI



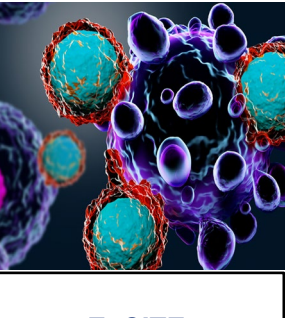
Proteomics *



Immune Monitoring



Flow Cytometry
in partnership with
Dept. of Pediatrics



ExCITE Cell Therapy *



Goal: Provide comprehensive and cutting-edge services and expertise to meet the existing and future needs of our members across all four programs.

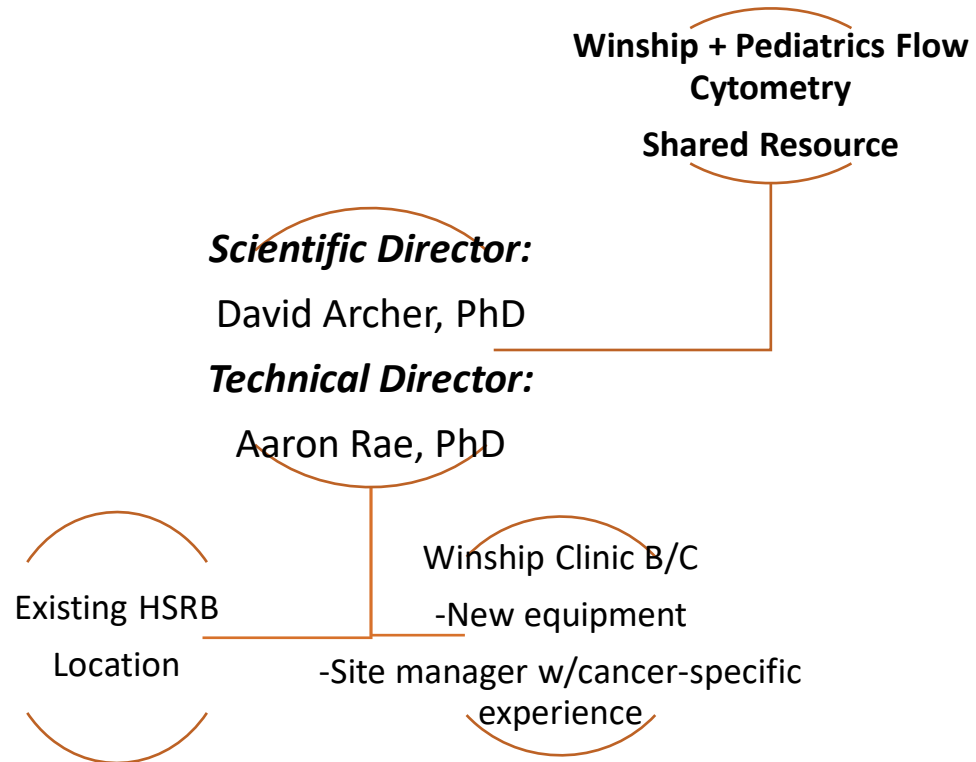
187 Winship members in 2021

Across all 4 programs

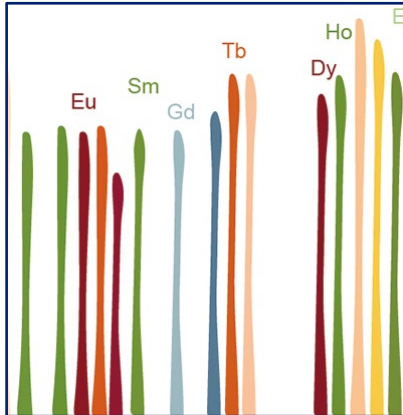
Grew from 8 to 12 shared resources in the last 4 years

Flow Cytometry SR

- Partnership with Pediatric Flow Cytometry SR (established 2011)
- Provides open access, subsidized rates, and cutting-edge equipment to Winship members
- Launched Winship Clinic C Site
- Purchase of 2 Cytek Aurora Cytometers, BD Symphony A5, and BD Symphony A3



Winship Immune Monitoring



**Immune
Monitoring**



**Kavita
Dhodapkar, MD**

Overview

The goal of the Winship Immune Monitoring shared resource is to provide Winship members with access to the innovative high dimensional mass cytometry analysis platform Helios.

Members can apply mass cytometry data analysis in applications including cell identification, detection of clinical biomarkers, cell phenotyping, phosphorylation-induced signaling, and functional readouts of cell-cycle status, proliferation, and apoptosis in human and murine samples.

We are capable of measuring over 40 available channels simultaneously using metal conjugated antibodies. Users can access the Helios mass cytometer and receive expert counseling on basic science and clinical research applications in the fields of immunology, cancer biology, systems biology, and autoimmunity.



Deon Doxie, PhD Technical Director

Winship Data and Technology Applications Shared Resource (Winship-DATA SR)

Leadership

Mission and Goal Winship DATA provides comprehensive and cutting edge informatics support and data analytic services to multidisciplinary Winship investigators. It aims to facilitate collaborative research through the best application of state of the art technologies and methods to augment the utilization of research information and knowledge.



Ajay Nooka, MD
Medical Director



Madhu Behera, PhD
Director

Technology and Services

Development Services

- Matching available resources to research needs
- Database development & management
- Development of web applications/data collection tools
- Development of mobile apps
- Build CRFs in existing platforms
- Informatics support for survey research

Analytic Services

- Utilization of large databases such as HCUP/SEER/TCGA/NCDB/VHA
- Clinical annotation for disease specific biospecimen banks or specific IRB approved research projects
- Data collection templates, abstraction & collection
- Cohort discovery (using i2b2 tool, CDW and/or Emory/GA registry)
- Grants/manuscripts/abstract support
- Informatics and data abstraction training



Where to start?

winshipcancer.emory.edu/research/shared-resources/index.html



Shared Resources at Winship

Our shared resources are technology service facilities that support the cancer research efforts of investigators across Emory University campus, and at other institutions.

Winship's shared resources are supported by the Cancer Center Support Grant from the National Cancer Institute.

The shared resources offer centralized access to state-of-the-art equipment, scientific consultation, data and biostatistics services that would be too difficult or expensive for individual investigators to acquire and maintain. Additional support may come from chargeback systems and institutional funding.

Need assistance?

If you are a cancer investigator and you are not sure which shared resource(s) may best fit your needs, fill out our form with your contact information and a brief description of your project. Once we receive your submission, we will contact you to help guide you through the initial process.

[Request Assistance](#)

Today's presentation

- 1. School of Medicine Resources**
- 2. Georgia CTSA Resources**
- 3. Scientific Core Resources**
- 4. Institutional K Grants**
- 5. Other funding mechanisms suitable for junior faculty**
- 6. Grant writing and grant editing support**
- 7. Other/misc**

Today's presentation

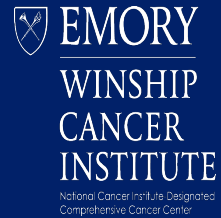
4. Institutional K Grants

- Winship K12 Clinical Oncology Training Program (Dhodapkar)
- Building Interdisciplinary Research Careers in Women's Health (BIRCWH) (Michopoulos)
- Georgia CTSA KL2 (Michopoulos)
- Atlanta Pediatrics Scholars Program (Heilman)



WINSHIP K12 CLINICAL ONCOLOGY TRAINING PROGRAM

MPIs: Suresh Ramalingam, MD and Kavita Dhodapkar, MD



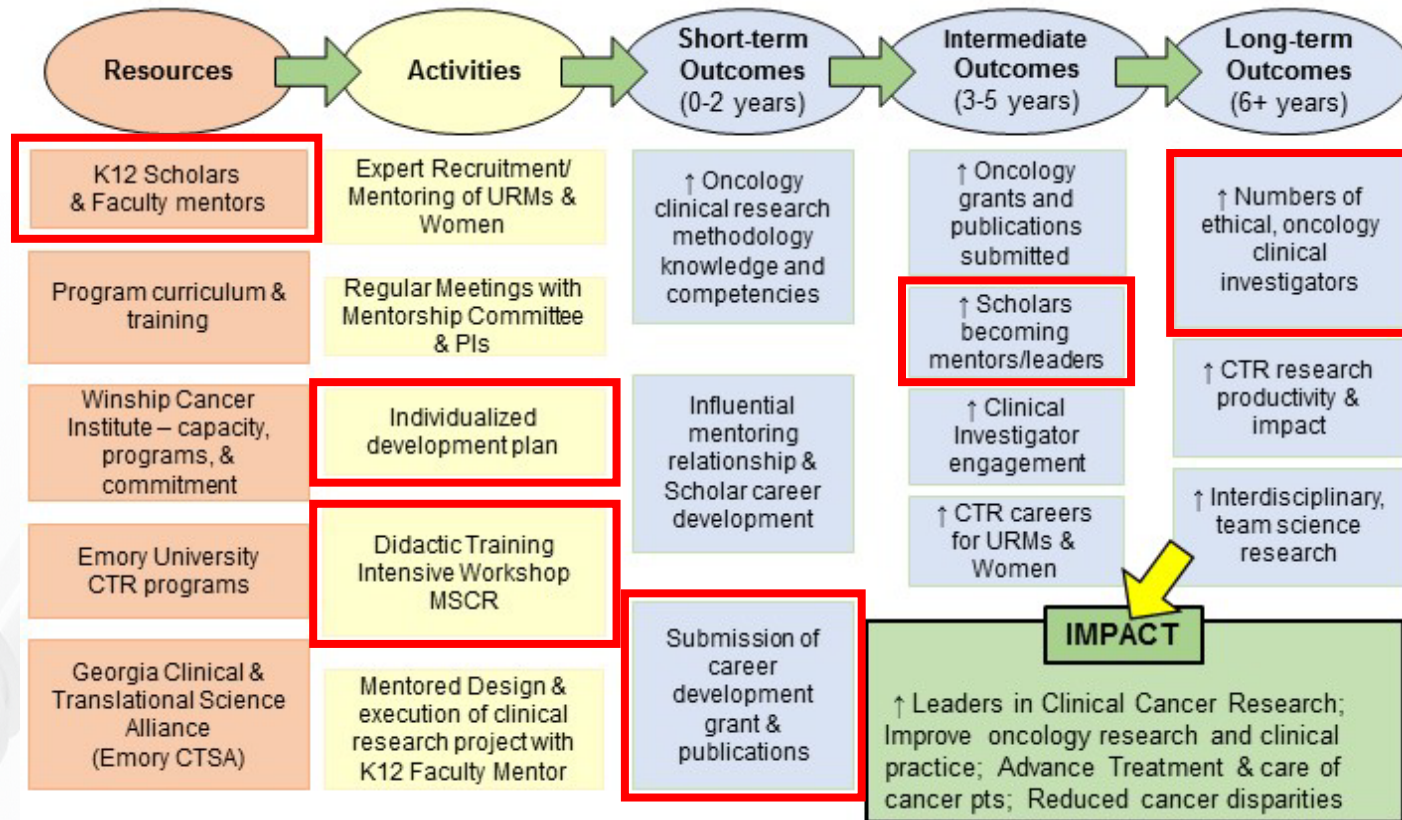
National Cancer Institute Designated Comprehensive Cancer Center



ABOUT THE WINSHIP K12 CLINICAL ONCOLOGY TRAINING PROGRAM

- ❖ The goal is to establish an exceptional training program for **clinician-investigators** in the conduct of **therapeutic cancer clinical research studies** with a focus on Phase I and Phase II clinical trials; and to develop the next generation of researchers and leaders in clinical oncology.
- ❖ Selected scholars will have full-time appointments and will receive 75% protected time for research, formal mentored training in clinical cancer research, up to \$100,000 per year (up to **two years**) to support salary and benefits, and up to \$30,000 per year (up to two years) for other research/training related expenses.
- ❖ The program combines key **didactic, research, and career development** components to train independent and productive clinical oncology researchers.

PROGRAM OVERVIEW



CAREER DEVELOPMENT GOALS

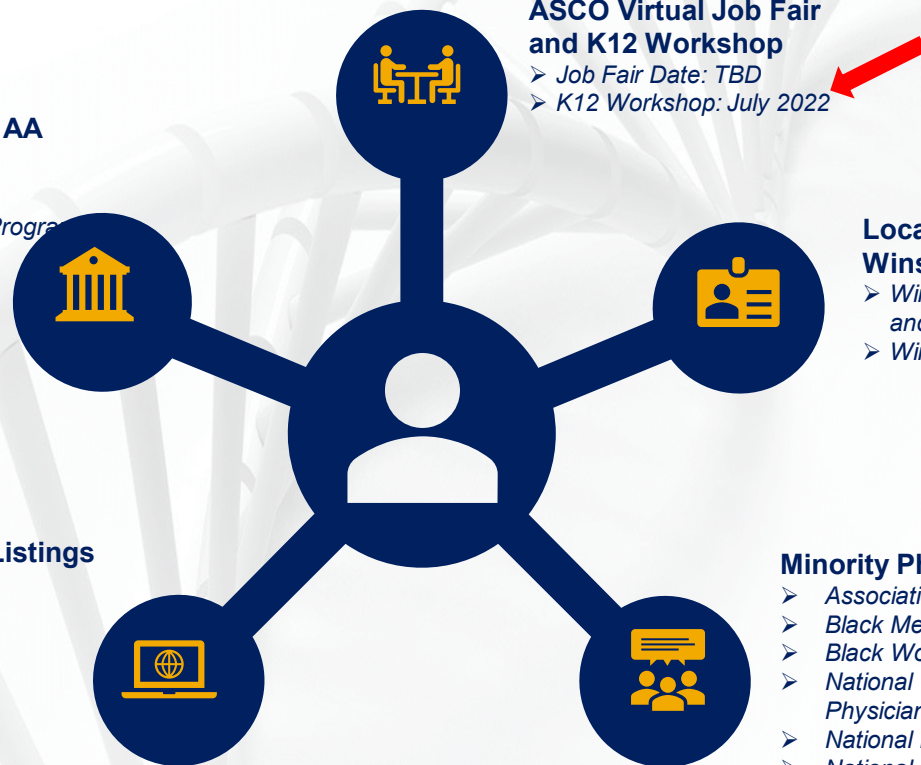
The career development goals are to provide:

- ❖ A **core set of training** on [ethical conduct of research, scientific and grant writing, conduct and communication of team science];
- ❖ **Methodological and analytical skills** to support innovative design and rigorous testing of clinical trials including:
 - a. Statistics
 - b. Measurement of bio- and behavioral markers
 - c. Patient-reported outcomes;
- ❖ **Mentorship** of Scholars to guide their clinical research and a **personalized career development plan** so that they will initiate and sustain interdisciplinary scholarly inquiry in a substantive area.

RECRUITMENT STRATEGIES

Medical Schools with the most AA enrollment and HBCU Medical Schools

- Institutions that do not have a K12 Program
- >10% AA enrollment



ASCO Virtual Job Fair and K12 Workshop

- Job Fair Date: TBD
- K12 Workshop: July 2022

Local Listservs and the Winship K12 website

- Winship and GACTSA Listservs and newsletters
- Winship K12 website

Online Job Listings

- AACR
- ASCO

Minority Physician Organizations

- Association of American Indian Physicians
- Black Men in White Coats
- Black Women Physicians
- National Council of Asian Pacific Islander Physicians
- National Hispanic Medical Association
- National Medical Association

SCHOLARS

The Winship K12 Clinical Oncology Training Program commenced its second cohort July 1, 2021.

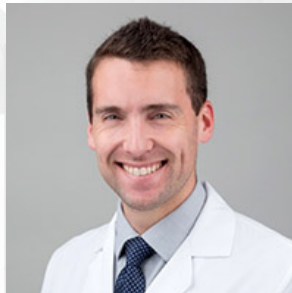


GY3 Winship Clinical Oncology K12 Scholars



Zachary Buchwald, MD, PhD
GY2

Project Title: *The impact of SRS on the stem-like T-cell niche in brain metastases*



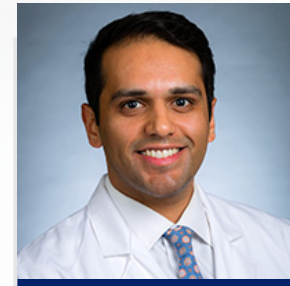
Victor M. Orellana-Noia, MD
GY2

Project Title: *The application of immune-based targeted therapies for non-Hodgkin and Hodgkin lymphoma*



Jade Jones, MD
GY3

Project Title: *Assessing Provider Perceptions and Practices Regarding Molecular Testing in Black Women with Metastatic Breast Cancer at an Academic and Public Hospital in Georgia*



Sagar A. Patel, MD
GY3

Project Title: *Association between androgen deprivation therapy and accelerated coronary atherosclerosis*

2021-2022 REQUEST FOR PROPOSALS

- ❖ **Post Date: Monday, October 1, 2021**
- ❖ **LOI Due Date: Monday, November 2, 2021**
- ❖ **Selection for Full Proposal Date: Monday, November 29, 2021**
- ❖ **Full Application Due Date: Monday, January 10, 2022**
- ❖ **Scholar Start Date: Friday, July 1, 2022**

LEARN MORE

❖ **Email:** k12oncologyscholars@emory.edu

❖ **Website:** <https://winshipcancer.emory.edu/k12-program>

Georgia CTSA KL2 Program (Junior Faculty Career Development)

Georgia CTSA

Advancing Health Equity

Didactic and Mentored
Clinical & Translational
Research Training Program

Research Education Program

- KL2 program (jr. faculty career development)
- Master of Science in Clinical Research (MSCR)
- Certificate Program in Translational Research



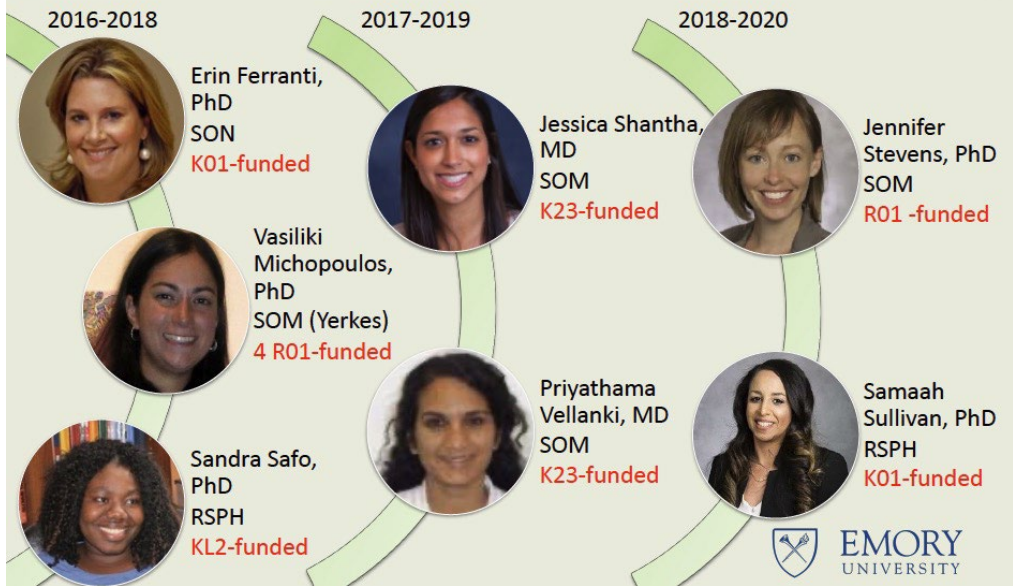
www.georgiactsa.org



KL2 Track Record

- 70% of KL2 graduates are federal funded
- Total federal awards exceed \$175M
- Non-federal awards (foundation, pharma) exceed \$36M.

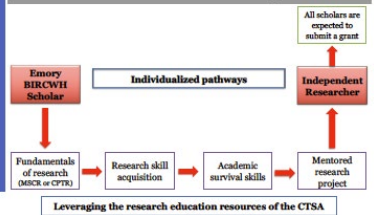
Emory BIRCWH Scholars



Our goals

- Didactic research training
- Hands-on one-on-one mentored research project
- Fostering scientific leadership and team science

Aligned with the NIH Office of Research in Women's Health (ORWH) – the BIRCWH fosters career development in women's health research through



Total Publications & Grant Awards

Papers	Papers since becoming BIRCWH scholars				
	211	<table border="1"> <tr> <td>86</td> <td>1st / last authored</td> </tr> <tr> <td></td> <td>38</td> </tr> </table>	86	1st / last authored	
86	1st / last authored				
	38				
	11 grant applications: 10 awarded \$16 M of awarded grants				

Personalized Training Pathways

KL2 & BIRWCH Metrics

▫ Research Careers in:

- Academic
- Federal (e.g., CDC, NIH, FDA)
- Industry (e.g., Pharma, Biotechnology)
- Foundation, Research Institute or other NGO

▫ Metrics

- Grants
- Publications
- Other—leadership roles, mentorship, team science, appointment

Application deadline:

- KL2 and K12
- BIRWCH: usually in February or March

Atlanta Pediatric Scholars K12 Program



Program Scope

- Funded by The Eunice Kennedy Shriver National Institute of Child Health and Human Development; K12HD072245; PI, Lucky Jain,
- This program supports research career development for **pediatricians who are commencing basic science research relevant to the field of pediatrics**
- Provides 75% protected time toward pursuit of independent extramural research funding

Productivity and accomplishments

- Funded 15 scholars since 2012
- All previous scholars have successfully competed for extramural funding (10/11 NIH funding)
- 3 out of 4 current scholars already successfully acquired extramural funding



Atlanta Pediatric Scholars K12 Program

- Recently featured on The Pediatric Institute Pod!

The Pediatric Institute Pod

This month's podcast episode features **Stacy Heilman and Glaivy Batsuli**. They discuss the K12 program, which is funded by The Eunice Kennedy Shriver National Institute of Child Health and Human Development. This program is a mentored institutional career development program for senior fellows and junior faculty who have recently completed postgraduate clinical training in pediatrics and are committed to launching an independent basic science research career. This program provides a dedicated period of career development that includes didactic coursework, mentored research training and 75% protected research time towards the pursuit of independent extramural research funding.



Directions on how to listen on your cell phone:

1. [Click this link](#) on your cell phone.
2. Enter your email address in the URL.
3. Click "Verify Email and Subscribe."
4. Check your email from Pediatric Institute (via Transistor) and click "Listen now."
5. Select the podcast player you use.
6. Click subscribe!

If you need more assistance on how to subscribe and to see which podcast apps are compatible with our private podcast, you can get more directions by clicking the button below.

Today's presentation

- 1. School of Medicine Resources**
- 2. Georgia CTSA Resources**
- 3. Scientific Core Resources**
- 4. Institutional K Grants**
- 5. Other funding mechanisms suitable for junior faculty**
- 6. Grant writing and grant editing support**
- 7. Other/misc**

Today's presentation

5. Other funding mechanisms suitable for junior faculty

SCORE and CFAR funding (Kimbi Hagen)

Pediatrics specific funding (Stacy Heilman)

Winship funding (Larry Boise)

❖ Funding

- Pilot Grants - \$30K (Next Deadline 12/1/21)
- Accelerator Awards - \$2K (Rolling Deadline)

❖ Skill Building

- **December 1, 2021:** 2nd Annual Workshop on
How to Incorporate Sex as a Biological Variable (SABV) in Your Research

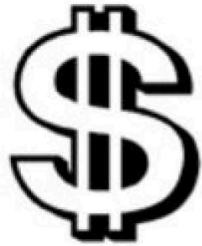
❖ Education

- Periodic seminars on expanding your research to include SABV

<http://score.emory.edu>



Emory Center for AIDS Research (CFAR) Developmental Core



Research Funding

- CFAR-series Awards
 - CFAR-03
 - CFAR-HBCU
 - CFAR-K
- Opportunity Awards
- NIH Supplements
 - CFAR Adelante
 - CFAR Admin
 - CFAR Ending the HIV Epidemic



Proposal Support

- **CFAR-series Orientation**
- NIH Grant Writing Courses
 - Planning for Success (R-level)
- Pre-submission Review
 - CFAR-series
 - Community-Engaged Support
 - NIH



Mentoring Assistance

- CFAR Connections
- **Research Idea Design Studio**
- Postdoc Pathways



Professional Development

- Science Communication
 - Poster & Slide Tutorials
 - Oral Abstract Practice
 - **NIH Reviewer Training**
 - **Editorial Support**
- Half-Day Intensives
 - Communicating Science
 - **Community-Engaged Research**
 - **Team Science**

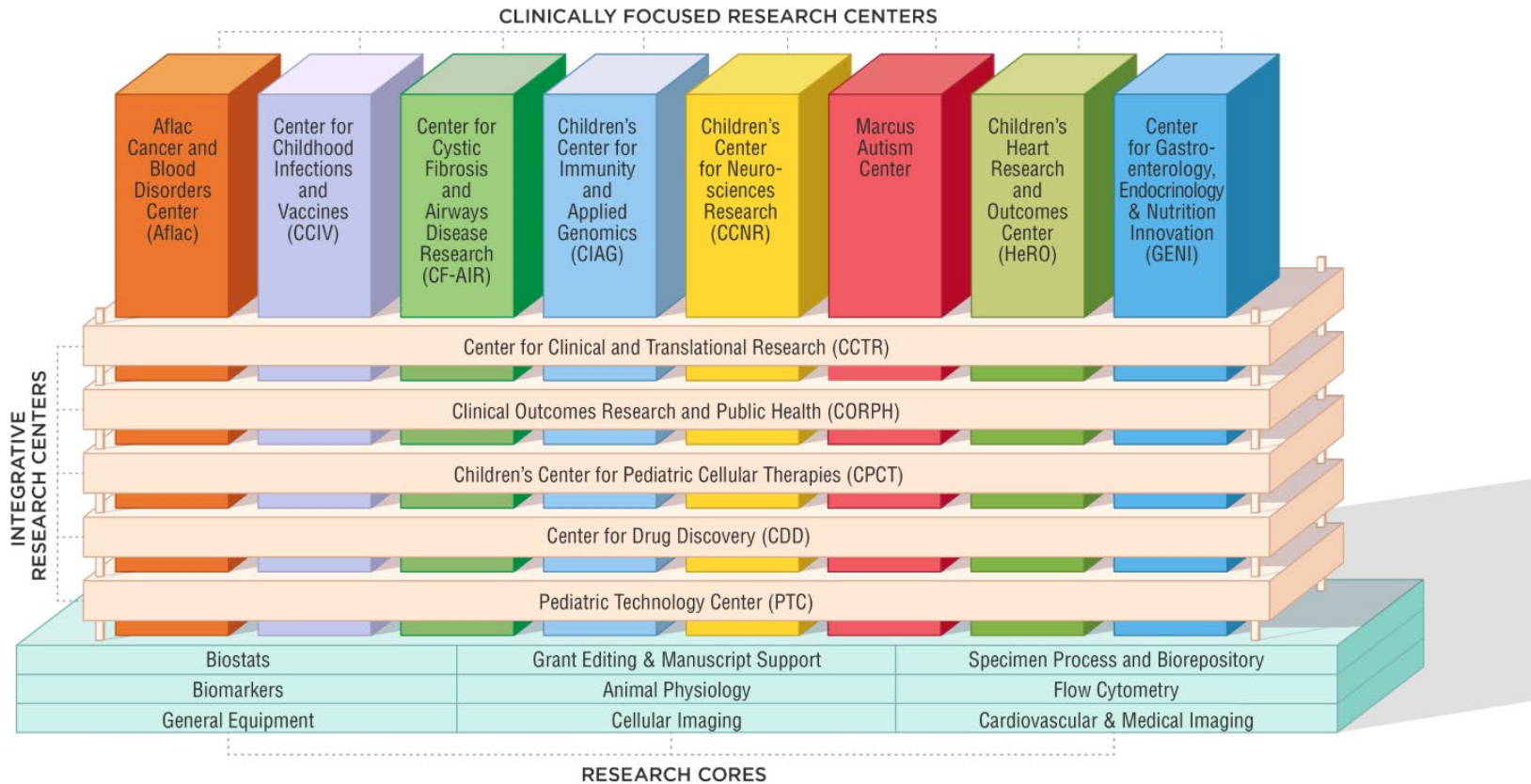
<http://cfar.emory.edu>

Pediatrics specific research funding



The Pediatric Research Ecosystem

EMORY + CHILDREN'S PEDIATRIC RESEARCH ECOSYSTEM



Pediatric Seed/Pilot Funding Opportunities

- ✓ Pediatric Center Pilots - \$50K offered annually
- ✓ Examples targeted to early stage/emerging researchers
 - Pediatric Junior Faculty Focused (JFF) Pilots - \$50K annually (deadline July 1 annually)
 - Buchter Resident/Warshaw Fellow Research Awards - \$2500/\$5000 annually (deadline April 1 annually)

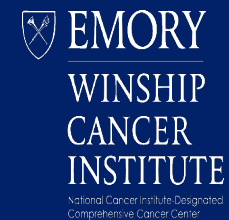


<https://www.pedsresearch.org/research/resources/funding/pilot-grant-programs/pediatric-research-center-pilot-grants>



WINSHIP FUNDING OPPORTUNITIES FOR JUNIOR INVESTIGATORS

Larry Boise, PhD



National Cancer Institute Designated Comprehensive Cancer Center



CAREER DEVELOPMENT FUNDING OPPORTUNITIES AT WINSHIP

- Lung Cancer SPORE Career Enhancement Program
- ACS Institutional Research Grant Awards (ACS-IRG)
- Winship Invest\$ Pilot Grant Program
- Winship Invest\$ Prostate Cancer Research Program
- <https://winshipcancer.emory.edu/research/funding-opportunities/winship-awards-and-pilot-grants.html>

CAREER DEVELOPMENT OPPORTUNITIES IN LUNG CANCER RESEARCH

The Winship Lung Cancer SPORE aims to promote the advancement of early career lung cancer investigators through the conduct of a mentored Career Enhancement Program (CEP).

The CEP aims to provide an environment that enables talented early career investigators to engage in a two-year mentored research program and to facilitate their success and their academic career development in terms of achieving independent investigator status.

Awards are for up to \$50K/year for two years.

Look for 2022 Request for Proposals in February with a due date in March/April for a June, 2022 start date.

<https://winshipcancer.emory.edu/files/research-files/spore-files/winship-invests-cep-rfp.pdf>

2021 Lung Cancer CEP Recipients



Ahmet Coskun,
PhD,
*Spatial Subcellular
Signaling Networks
for Non-Small Cell
Lung Cancer
Therapies*



Aparna Kesarwala, MD,
PhD,
*Metabolic effects
of radiation in the
lung cancer
microenvironmen
t*

AMERICAN CANCER SOCIETY IRG GRANT AWARDS

The American Cancer Society Institutional Research Grants (ACS-IRG) are designed to support the development of beginning investigators conducting cancer research by providing pilot funds to obtain preliminary results that will enable them to compete successfully for national research grants.

- Applicants should be Assistant Professors, Instructors (or equivalent) with faculty appointments of six years or less, who are eligible to apply for independent national competitive (peer-reviewed) research grants, but who currently do not hold such funding. **Awards are \$30K for 1 year. Four awards/year are funded.**
- ACS-IRG awardees will be mentored by a Winship Executive Committee faculty member who has expertise in the mentee's area of research. Mentors will meet on a regular schedule with the mentee to develop an individual mentoring plan, to review scientific progress and research direction, to provide guidance in the preparation of manuscripts and subsequent grant applications, and to provide guidance in career development activities.
- As part of their professional development, ACS-IRG awardees will be invited to serve on the ACS-IRG Executive Committee after the conclusion of their award, where they will review ACS-IRG proposals.
- This program is currently in a no cost extension because of COVID19, however we anticipate hearing about funding any day now, so be on the lookout for a request for proposals in early 2022.



WINSHIP INVEST\$

- *Winship Invest\$*, a peer-reviewed program designed to fund innovative cancer research projects at Winship, is supported by philanthropic contributions as well as developmental funds through Winship's Cancer Center Support Grant (P30CA138292) from the National Cancer Institute of the National Institutes of Health.
- *Winship Invest\$* has two funding cycles every year. **Next RFP will be in early 2022.**
- Funds are typically \$50K for 1 year, however it can be more for requests that are related to collaborative proposals.
- For each funding cycle, there are different themes for the requests. Some are disease-based, others are specific to the Winship Scientific programs.

WINSHIP INVEST\$ - SUMMER 2021 RFP

1. **Team Science-Based Research** – Will support collaborative efforts that leverage the strengths and expertise of two or more PIs from at least two Winship research programs.
2. **Early Career Investigator Research Projects** – ACS-IRG Eligibility
3. **Cancer Disease Type-Specific Research** – The following opportunities will focus on one specific cancer disease category. For each category budgets of up to \$50,000 for one year will be considered. Awards under this opportunity are limited to this RFP cycle only and include:
 - Breast Cancer Disease Type-Specific Research** – Thanks to the generous donations from the Glenn Family, we are pleased to solicit proposals for breast cancer specific research.
4. **Immunology (CI) Program** – The CI Program will be considering applications with the following emphasis:
 1. **Intra-programmatic Activities** – Research projects that stimulate intra-programmatic team science activities. Must have two or more CI Program members, each of whom has a substantial intellectual contribution to the project. CI Program emphases include cellular responses to genomic insults, cancer epigenetics, and cancer genomics. *Cross theme interactions are highly encouraged in addition to projects with direct relevance to the Winship catchment area.*
5. **Cancer Prevention and Control (CPC) Program** – The CPC Program will be considering inter-programmatic proposals (representing one member of the CPC Program and a member of any one of the other Winship Research Programs) with the following emphasis:
 1. **Cancer Epidemiology**, which aims to identify risk factors, including individual biological and behavioral factors, community and policy factors, and environmental exposures in an effort to inform targeted interventions and strategies to reduce cancer risk in Georgia.
 2. **Interventions**, which focuses on chemoprevention trials, individual behavioral interventions, and policy and systems-level changes with the ultimate goal of broad-scale implementation of effective strategies. Preference will be given to the collaborations with the CMB program members.
 3. **Cancer Survivorship**, which focuses on treatment-related early effects, including patient-reported outcomes, biobehavioral changes in the brain, and late effects such as cardiovascular diseases, all of which substantially affect the quality-of-life of cancer survivors;
 4. **Quality of Cancer Care**, which aims to conduct population-based research that describes, interprets, and predicts the impact of health care interventions and other factors on quality of cancer care and outcomes.
6. **Cell and Molecular Biology (CMB) Program** – The CMB Program will be considering applications with the following emphasis:
 1. Research projects that are intended to stimulate new intra-programmatic collaborations, and preference will also be given to the collaborations with the CPC program members. Each application must have two or more co-PIs. Since the funding is intended to stimulate new interactions, the co-PIs cannot have a record of prior joint funding or publications within the last three years.
 2. Research with a direct impact on catchment relevant priorities.
7. **Discovery and Developmental Therapeutics (DDT) Program** – The DDT Program will be considering applications with the following emphasis:
 1. The newest thematic area for cancer treatment delivery technology.
 2. Research with a direct impact on catchment relevant priorities.
8. **General Category** – Any research project as proposed by a Winship member whose topic is not covered by a one of the other RFP categories. Project should focus on novel research ideas that will lead to external peer-reviewed funding. Project may include research related to clinical care process improvements.

WINSHIP INVEST\$ PROSTATE CANCER PROGRAM

- **Funding for this program is through generous gifts from the Dunwoody Country Club Champions Golf Association and the Club's John H. Kauffman Prostate Cancer Fundraiser.**
 - Innovative proposals that address prostate cancer research including but not limited to basic or translational research, investigator initiated clinical trials (related IRB submission must be either in review or approved), health disparities, imaging, survivorship or quality of life will be considered for funding. Proposals from Winship members at institutions outside of Emory are highly encouraged.
 - PI's should hold a faculty appointment at the rank of senior associate, instructor, assistant professor, associate professor or professor.
 - At time of funding, PI's must be an active Winship Member in good standing or have applied for Winship Membership.
 - Funding is for up to \$50K for 1 year
 - **Next RFP should be early 2022**

Today's presentation

- 1. School of Medicine Resources**
- 2. Georgia CTSA Resources**
- 3. Scientific Core Resources**
- 4. Institutional K Grants**
- 5. Other funding mechanisms suitable for junior faculty**
- 6. Grant writing and grant editing support**
- 7. Other/misc**

Today's presentation

6. Grant writing and grant editing support

Grantwise (Kathy Griendling)

Pediatrics Grant Editing and Manuscript Support (Stacy Heilman)

Georgia K Advance (Vas Michopoulos)

Emory Office of Postdoctoral Education (Stacy Heilman)

Georgia CTSA Grant Wise Program

- **Grant Wise**

Offers the opportunity for one-on-one feedback from experienced senior faculty (aka consultants) to junior faculty on grant writing.

Interested faculty and trainees submit an online request for a consultation and are then paired with a senior faculty member from our list of volunteer consultants.



Grant Wise

Expert advice on your grant ideas

- **21 successfully matched pairs**

(as of 7/20/21)

- 6 NIH K series
- 7 NIH R series
- 2 Foundation
- 1 HRSA
- 2 NSF
- 1 USDA
- 2 CDC

Pediatric Cores

<https://www.pedsresearch.org/research/cores/>

- **Cores for exclusive use by those conducting child health related research**
 - Biostatistics
 - Grant Editing & Manuscript Support (GEMS)



Grant Writing & Manuscript Support (GEMS) Core

Fully subsidized

Overview

<https://www.pedsresearch.org/research/cores/gems-core/overview/>


The Grant Editing & Manuscript Support Core (GEMS) provides a number of resources to aid grant and manuscript development and writing.


Services/Expertise offered

- **Format Editing** - edit for consistent formatting and adherence to standard grant/manuscript writing practices
- **Technical Editing** - editing that includes revising and reviewing technical/scientific information to ensure clarity and consistency and use of endnote libraries for bibliography
- **English Language Proofreading** – editing to ensure proper use of English language including use of proper grammar and final proofreading
- **Strategic advice** regarding development of specific aims pages, communication with the NIH and education on standard grant application processes

GRANT EDITING AND MANUSCRIPT SUPPORT CORE	
Overview	
Grant Service Request Form	
Manuscript Service Request Form	

Key Contacts

 Stacy Heilman, PhD
stacy.heilman@emory.edu
404-727-4819

 Becky Kinkead, PhD
bkinkea@emory.edu
404-727-3719

K-Advance Program

- Mentoring focused on K to R conversion for NIH-funded K awardees (former KL2 scholars, K12-BIRCHW, UL1 diversity supplement)
- Two-tiered feedback approach of R01 (or equivalent) submissions:
 - Internal review by peers and program faculty
 - External review by faculty with study section and subject matter expertise
- Provides grantsmanship and biostatistical consultation/expertise
- Provides resources/materials and examples of successful applications (Emory 1% Club) via OneDrive shared folder
- Creates peer network for early stage investigators
- New “Advanced Grant Writing” MSCR Courses coming in 2022

Office of Postdoctoral Education (OPE) programs

<https://med.emory.edu/education/postdoctoral-training/index.html>

Lou Ann Brown, PhD

Director, Office of Postdoctoral Education

Lydia Soleil, PhD

Director of Career Development
Office of Postdoctoral Education
Emory University School of Medicine
Atlanta, GA

lydia.soleil@emory.edu

[\(404\) 727-3168](tel:(404)727-3168)

[Book a 1:1 Career Consultation Appointment](#)

Postdocs Grant Writing Resources

Workshops (Zoom) & 1:1 Consulting

Dr. Becky Kinkead, becky.kinkeadga@gmail.com

- F32 Boot Camp
- Specific Aims: The MOST Important Page
- Preparing your NIH Biosketch

Postdocs Grant Writing Resources

NIH K Awards Resources

Dr. Janet Gross

Co-director, MSCR594 Grant and Scientific

Writing & Proposal Development Consultant

- Dropbox: Tutorial Recording, Slides & Resources
- 1:1 Consulting for those who have watched Tutorial

Postdocs Grant Writing Resources

WriteNow Access: 8-week program for postdocs to help them accomplish writing goals by National Center for Diversity and Development (NCFDD)

- Access to the WriteNow platform which encourages:
 - Setting writing goals
 - Writing at least 30 minutes a day
 - Reflecting on writing goals & process
 - Discussion forums with tenured faculty support
 - Group Accountability
 - Weekly emails with tips and assignments to move writing projects forward
- ❖ Office of Postdoctoral Education (OPE) sponsors cost for 20 - 30 Postdocs/year.
- ❖ Typically offered once each fall, spring, summer, advertised via OPE Newsletter & list-serv.

Today's presentation

- 1. School of Medicine Resources**
- 2. Georgia CTSA Resources**
- 3. Scientific Core Resources**
- 4. Institutional K Grants**
- 5. Other funding mechanisms suitable for junior faculty**
- 6. Grant writing and grant editing support**
- 7. Other/misc**

Today's presentation

7. Other/misc

- DOM sponsored programs (Griendling)
- DOP sponsored programs (Heilman)

Emory Dept of Medicine Programs



Data Analytics and Biostatistics Core

<https://med.emory.edu/departments/medicine/research/support-programs-resources/dab-core.html>

- **Purpose:** to provide high-quality biostatistics and IT Data management services to the Department of Medicine.

Biostatistics and Study Design

- Analytic plan development
- Protocol development
- Sample size calculations
- Case report form design
- Statistical analysis
- Close collaboration with investigators and data management and extraction services

Clinical Data Extraction

- Compliant data extraction
- Coordination of data requests
- Definition of requirements and translation to appropriate queries
- Proper data stewardship
- Integration of data from multiple sources
- Extraction of data in a format for use

Road 2 NEXt sUcCeSs (R2NEXUS)

<https://med.emory.edu/departments/medicine/research/support-programs-resources/r2nexus.html>

- **Purpose:** to help early-career faculty obtain career development awards (CDA) and support them on their paths towards independent funding.
- R2NEXUS CDA Transition Committees
 - Consists of senior researcher, study section member, researcher who has successfully transitioned their CDA award
 - Meets annually to review progress and help overcome barriers
- R2NEXUS Workshop series
 - Four workshops (2-3 held each year) that cover different aspects of research program development
 - Topics: Research Program Development; Managing Your Research Program; Preparing Your R01/MERIT application; Renewals, Resubmissions and Revisions

Emory + Children's Resources



Academic partners advancing pediatric research

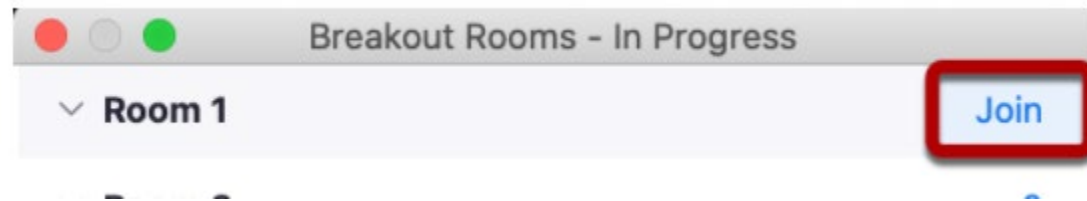
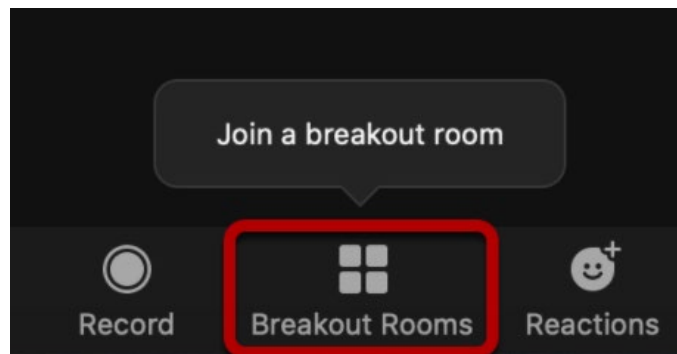
K-POP

- Stands for “K People of Pediatrics”
- All K awardees in Pediatrics (and/or K awardees pursuing research related to child health) are invited to participate
- Meet several times a year to provide support and guidance throughout the K journey
- Led by Drs. Claudia Morris (K24 PI) and Stacy Heilman

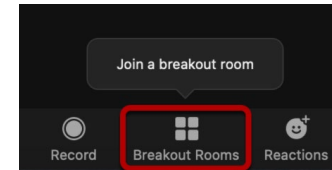


Time to ask your questions!

- Join one or more break out rooms!
- Room will stay open until 1 pm
- Feel free to move around - Return to main room to select another breakout room if you wish
- Next slide shows the topics available to be discussed in each room



Join a breakout room to ask your questions



SOM/DOM

Kathy Griendling, kgriend@emory.edu

- School of Medicine Programming
- Dept of Medicine research resources
- Grantwise

SCORE/CFAR

Kimbi Hagen, kbs.hagen@emory.edu

- SCORE pilots
- CFAR Developmental Core resources

Winship Resources

Larry Boise, lboise@emory.edu

Kavita Dhodapkar, kavita.dhodapkar@emory.edu

Adam Marcus, aimarcu@emory.edu

- K12 Clinical Oncology Training Program
- Winship Cores
- Winship grant funding opportunities

Pediatric Resources

Stacy Heilman, stacy.heilman@emory.edu

- Atlanta Pediatric Scholars K12 program
- Pediatric Cores
- Pediatric pilot funding opportunities

Georgia CTSA Resources

Andrew West, awest2@emory.edu

Emory Integrated Core Facilities (EICF)

Rich Johnston, hjohns5@emory.edu

KL2/BIRWCH/K Advance

Vas Michopoulos, vmichop@emory.edu

- Building Interdisciplinary Research Careers in Women's Health (BIRCWH) K12 program
- Georgia CTSA KL2 program
- K Advance program

Office of Postdoctoral Education (no breakout room today)

Leadership Contacts:

Lydia Soleil, lydia.soleil@emory.edu

Lou Ann Brown, lbrow03@emory.edu