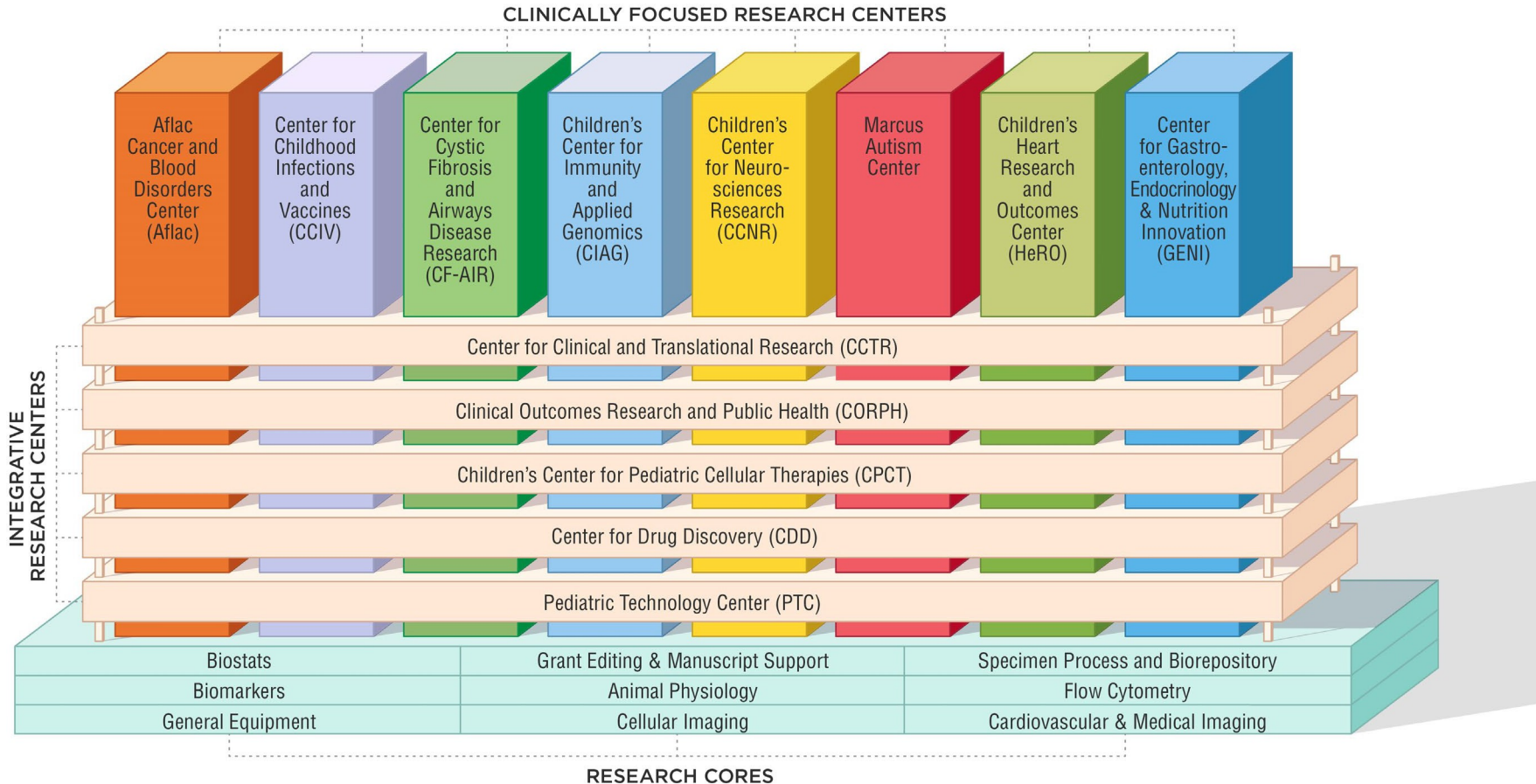


EMORY + CHILDREN'S PEDIATRIC RESEARCH ECOSYSTEM



Research Snapshot
March 2022

Research Resources:

The resources to the right are available to all investigators affiliated with Children's Healthcare of Atlanta (CHOA), including medical staff, Emory Department of Pediatrics (DOP) faculty and staff, and those outside of the DOP and CHOA who are members of our research centers. We encourage involvement of all those interested in research throughout our system and provide this as a guide to resources along with our research website www.pedsresearch.org. Our goals are to build infrastructure and programs that serve a broad community of scientists and clinicians engaged in pediatric research and provide training in grant writing and grant opportunities that enhance our extramural funding for all child health investigators affiliated with Children's Healthcare of Atlanta. For suggestions and comments on any of the initiatives and resources, please contact Clinton H. Joiner, MD, PhD Clinton.joiner@emory.edu or Stacy Heilman, PhD stacy.Heilman@emory.edu

Research Resources

Grant and Manuscript Support

- Stacy Heilman, PhD
Director, Research Operations 404-727-4819
stacy.heilman@emory.edu
- Assistance with finding grant opportunities and connecting to collaborators
- Core laboratory assistance, supervision

Grants & Manuscript Editing

- Prioritized for extramural funding opportunities, program projects
- Experienced at program project management, grant and scientific paper editing
- Request form on pedsresearch.org; send to Stacy Heilman

Biostatistics Core

[Shasha Bai, PhD](#), Director
[Scott Gillespie, MS, MSPH](#), Asst Director

- [Rohali Keesari, PharmD, MPH](#)
- [Adrianna Westbrook, MPH](#)
- [Yijin Xiang, MPH](#)

Procedure: Request form located at: <http://www.pedsresearch.org/research/cores/biostatistics-core/overview/>

Priorities: analysis for grant applications and Publications

Clinical studies/coordinators

- **CHOA Clinical Research Administration**
Hema Mody hema.mody@choa.org
(as of 1/18/22) 404-785-7477 and
Stephanie Meisner
Stephanie.Meisner@choa.org
404-785-6453
- **Manager, Egleston campus:**
Rebecca Cleeton 404-785-0109
rebecca.cleeton@choa.org
- **Manager, Hughes Spalding/ Scottish Rite campuses:**
Marco Benoit 404-785-2269
Macarthur.Benoit@choa.org
- **Lead Research Nurse, Pediatric Research Center (PCRU/CAP Building):**
Cheryl Stone, RN
cherylL.stone@choa.org
404-785-0400-main number

Pediatric Clinical Research Unit (PCRU)–

A six-bed outpatient research unit/ A two-bed inpatient research unit/A four-bed inpatient research unit/ A core research lab/A research pharmacy/ Bionutrition services/Nursing Services including, but limited to: Medication administration including investigational drugs; I.V. access and port access; I.V. infusions; Routine and complex vital sign monitoring; Phlebotomy; Timed specimen collections such as PK trials and oral glucose tolerance tests; Telemetry monitoring; For more information, please visit: <http://www.pedsresearch.org/research/support-services/dedicated-clinical-research-facilities>

Emory Clinical Research Services

- Sarah Marie Huban, Director
sarah.marie.huban@emory.edu
404-712-0736

Scientific Facilities Manager

- Kira Moresco, MS
kira.moresco@emory.edu
404-727-6515

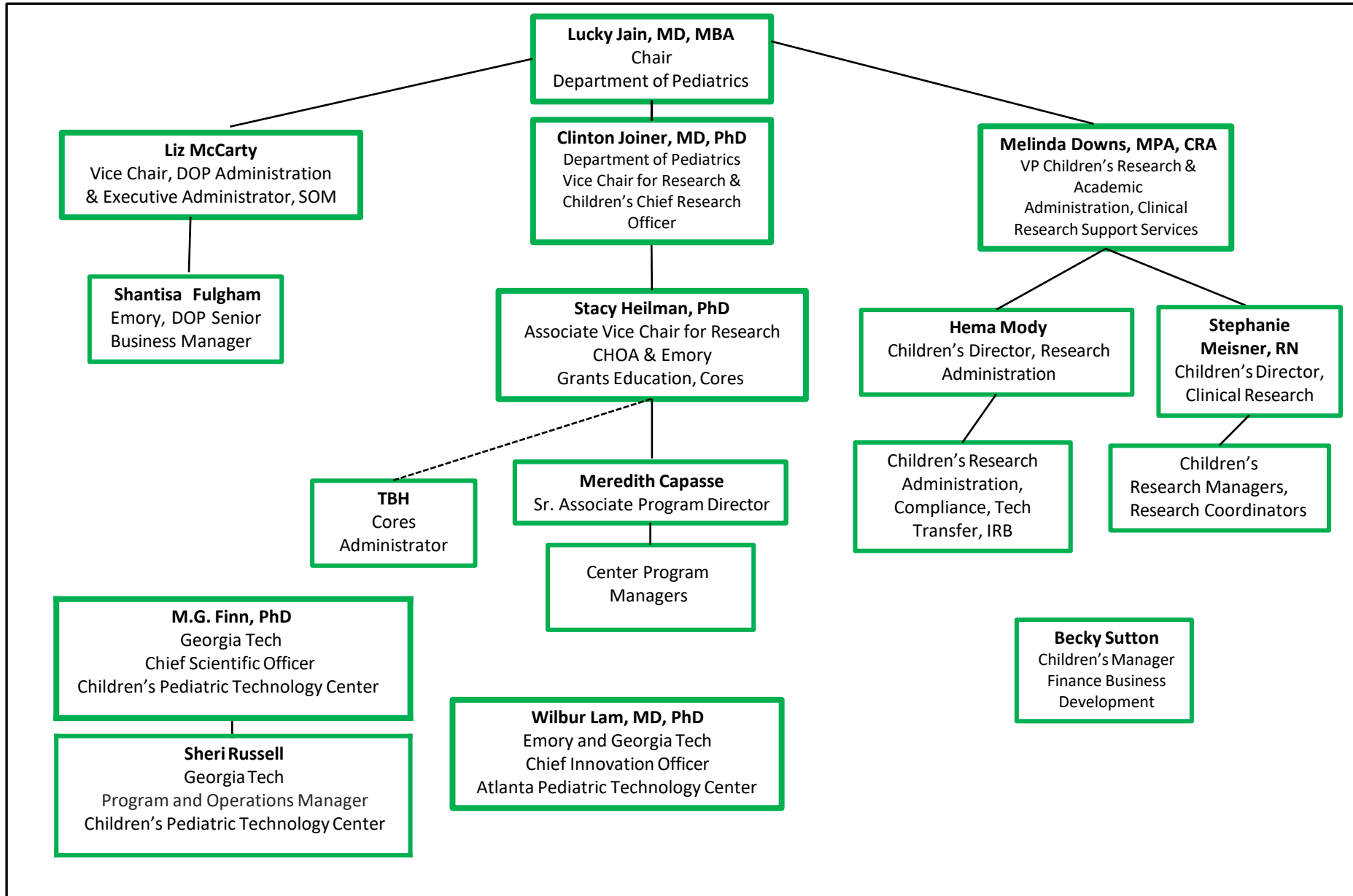
Equipment Core: Biosafety cabinet, incubators, clinical centrifuge, real-time PCR machine, standard PCR machine, multilabel plate reader, gel documentation system on order
Services: This core provides common equipment for investigator's use, including access to benchtop space and hood space, centrifuges for clinical specimen processing

Laboratory Specimen Processing:

Clinical Laboratory at Egleston and Scottish Rite

- Heather MacDonald, Manager
Advanced Diagnostics Laboratory
404-785-5766
Heather.macdonald@choa.org or
labresearchcoordinator@choa.org
- Clinical trials specimen processing, shipping, limited storage
- ACTSI processing lab
- Laboratory inventory management system (LIMS) available

Pediatric Research Operations Leadership



Pediatric Research Alliance Center Contacts

Center Directors:

Aflac Cancer and Blood Disorders Center

Center Director: Doug Graham, MD, PhD
douglas.graham@choa.org
Program Coordinator: Molly Green
molly.green@emory.edu

Children's Heart Research and Outcomes Center

Center Director: Mike Davis, PhD
michael.davis@bme.gatech.edu
Program Manager: Kelcey Little, MS
Kelcey.little@emory.edu

Center for Clinical and Translational Research

Center Directors: Claudia Morris, MD
claudia.r.morris@emory.edu and **Miriam Vos, MD, MSPH** MVOS@emory.edu
Program Manager: Kelcey Little, MS
Kelcey.little@emory.edu

Clinical Outcomes Research and Public Health

Interim Center Director:
Ann Mertens, PhD Ann.Mertens@choa.org
Program Manager: Tracy Willoughby
twillo2@emory.edu

Center for Cystic Fibrosis & Airways Disease Research

Center Director: Nael McCarty, PhD
namccar@emory.edu
Program Manager: TBH

Center for Drug Discovery

Center Director: Baek Kim, PhD
Baek.kim@emory.edu
Program Manager: Tracy Willoughby
twillo2@emory.edu

Center for Childhood Infections and Vaccines

Center Director: Ann Chahroudi, MD, PhD
ann.m.chahroudi@emory.edu
Program Manager: Megan Vallowe, PhD

Children's Center for Neurosciences Research

Interim Center Director:
Stacy Heilman, PhD
Stacy.heilman@emory.edu
Program Manager: Gillian Glauber
Gillian.Glauber@emory.edu

Center for Gastroenterology, Endocrinology, & Nutrition Innovation

Center Director: Saul Karpen, MD, PhD
Saul.karpen@emory.edu
Program Manager: Gillian Glauber
Gillian.glauber@emory.edu

Center for Pediatric Cellular Therapies

Center Directors: Edwin M. Horwitz, MD, PhD edwin.horwitz@emory.edu
and **H. Trent Spencer, PhD** hspence@emory.edu
Program Manager: TBH

Children's Center for Immunity and Applied Genomics

Center Director: Subra Kugathasan, MD
skugath@emory.edu
Co-Director: Greg Gibson, PhD
greg.gibson@biology.gatech.edu
Program Manager: Tracy Willoughby
twillo2@emory.edu

Marcus Autism Center

Center Director: Ami Klin, PhD
ami.klin@emory.edu and
Larry Scahill, MSN, PhD
lawrence.scahill@emory.edu and **Gordon J. Ramsey, PhD** gordon.ramsay@emory.edu
Program Manager: Gillian Glauber
Gillian.Glauber@emory.edu

Pediatric Technology Center

Chief Scientific Officer: MG Finn, PhD
mgfinn@gatech.edu
Program and Operations Manager: Sheri Russell
Sheri.Russell@tri.gatech.edu

Research Alliance Administration:

Lucky Jain, MD, MBA

Richard W Blumberg Professor and Chair
Emory University School of Medicine, Department of Pediatrics, Executive Medical Director & Chief Academic Officer, Children's Healthcare of Atlanta ljain@emory.edu

Clinton Joiner, MD, PhD

Vice Chair for Research, Emory Department of Pediatrics
Children's Chief Research Officer
clinton.joiner@emory.edu

Stacy S. Heilman, PhD

Associate Vice Chair for Research
Department of Pediatrics, Emory University & Children's Healthcare of Atlanta stacy.heilman@emory.edu

Liz McCarty

Vice Chair, DOP Administration & Executive Administrator, SOM. mmccar2@emory.edu

Shantisa Fulgham

Senior Business Manager, Department of Pediatrics, Emory University sfulgha@emory.edu

Melinda Downs, MPA, CRA

VP Research and Academic Administration
Children's Healthcare of Atlanta
Melinda.mathis@choa.org

Hema Mody

Director, Research Administration
Children's Healthcare of Atlanta

Stephanie Meisner, RN

Director, Clinical Research
Children's Healthcare of Atlanta
Stephanie.Meisner@choa.org

Meredith Capasse

Sr. Associate Program Director, Pediatric Research Alliance,
Emory University & Children's Healthcare of Atlanta
meredith.capasse@emory.edu

Pediatric Research Alliance

Locations and Contacts:

Emory Campus/Egleston

Emory-Children's Center (E-CC)

2015 Uppergate Drive
Atlanta, GA 30322



Health Sciences Research Building (HSRB)

1760 Haygood Drive, NE
Atlanta, GA 30322



Egleston hospital

1405 Clifton Road
Atlanta, GA 30322



Associate Vice Chair for Research Stacy Heilman, PhD

stacy.Heilman@emory.edu

Sr. Associate Program Director: Meredith Capasse

meredith.capasse@emory.edu

Manager, Egleston campus: Rebecca Cleeton

Rebecca.Cleeton@choa.org

Centers:

Aflac Cancer and Blood Disorders Center

Program Coordinator: Molly Green molly.green@emory.edu

Children's Heart Research and Outcomes Center

Program Manager : Kelcey Little, MS Kelcey.little@emory.edu

Children's Center for Clinical and Translational Research

Program Manager Kelcey Little, MS Kelcey.little@emory.edu

Clinical Outcomes Research & Public Health

Program Manager: Tracy Willoughby twillo2@emory.edu

Center for Cystic Fibrosis & Airways Disease Research

Program Manager: TBH

Center for Drug Discovery

Program Manager: Tracy Willoughby twillo2@emory.edu

Center for Childhood Infections and Vaccines

Program Manager Megan Vallowe, PhD Megan.Vallowe@emory.edu

Children's Center for Neurosciences Research

Program Manager: Gillian Glauber gillian.Glauber@emory.edu

Center for Pediatric Cellular Therapies

Program Manager: [TBH](#)

Children's Center for Immunity and Applied Genomics

Program Manager: Tracy Willoughby twillo2@emory.edu

Center for Advanced

Pediatrics (CAP)

1400 Tullie Road, NE
Atlanta, GA 30329

**Lead Research Nurse, Pediatric
Research Center Unit (PRCU/CAP**

Building): Cheryl Stone, RN

cheryll.stone@choa.org



Marcus Autism Center

1920 Briarcliff Road, NE
Atlanta, GA 30329 Program
Manager: Gillian Glauber

gillian.Glauber@emory.edu



Support Center I & II

1575 Northeast Expressway
Atlanta, GA 30329



Georgia Institute of Technology

Atlanta Pediatric Technology Center

Main Contacts:

Chief Innovation Officer: Wilbur Lam, MD, PhD,

wilbur.lam@emory.edu

Chief Scientific Officer: M.G. Finn, PhD mgfinn@gatech.edu

Program and Operations Manager: Sheri Russell

Sheri.Russell@gatech.edu

950 Atlantic Drive, NW
Atlanta, GA 30332



Hughes Spalding Hospital

35 Jesse Hill Jr. Drive SE
Atlanta, GA 30303-3032

Research Coordinator, Marco Benoit, MS

Macarthur.benoit@choa.org

Morehouse School of Medicine

PI: Lily Immergluck, MD, FAAP

Limmergluck@msm.edu



Scottish Rite Hospital*

1001 Johnson Ferry Road NE
Atlanta, GA 30342-1605

Children's Center for Clinical and Translational Research

Center Directors: Claudia Morris, MD, FAAP

claudia.r.morris@emory.edu and Miriam Vos, MD, MSPH

MVOS@emory.edu Program Manager: Kelcey Little, MS,

Kelcey.little@emory.edu

Manager, SR Campus: Marco Benoit (Macarthur.Benoit@choa.org)

*Research Office located in the Medical Library on the Ground Floor



Research-sponsored events/meetings:

(This is an overview, for specific dates/events, go to: <http://www.pedsresearch.org/calendar>)

MONDAYS	TUESDAYS	WEDNESDAYS	THURSDAYS	FRIDAYS	VARIOUS DAYS
				<p>Research Leadership Team (RLT) meetings: Designed for central team to discuss detailed operations and issues. For more information, contact Stacy Heilman stacy.Heilman@emory.edu</p>	<p>Research Advisory Council (RAC) meetings: twice monthly; restricted to RAC membership, contact Clint Joiner, MD, PhD for inquiries or suggestions Clinton.joiner@emory.edu</p>
<p>K club: Monthly discussions/lectures for K award training, other grants training/education. Typically 2nd Monday, September to May, Contact Stacy Heilman Stacy.heilman@emory.edu for more information. <i>Sponsored by Departments of Pediatrics and Medicine, Georgia CTSA, CFAR and Winship Cancer Institute</i></p>		<p>Research Grand Rounds: one Wednesday each month, Egleston, 8:00 AM Contact Meredith Capasse meredith.capasse@emory.edu</p>		<p>Research Seminars: Fridays (Zoom/Egleston Classrooms). Contact Meredith Capasse for suggestions or needs Meredith.capasse@emory.edu</p>	<p>Invited speakers through seminar series sponsored by centers; contact Center Directors or Meredith Capasse at Meredith.capasse@emory.edu if interested in upcoming events. Center Directors are listed on pedsresearch.org website.</p>

Specialized Research Equipment/Service Cores:

CORE	SCIENTIFIC DIRECTOR	TECHNICAL DIRECTOR/ CONTACT	EQUIPMENT	LOCATION	SERVICES
Animal Physiology Core	Nitya Bakshi, MD nitya.bakshi@emory.edu	Ming Shen mshen@emory.edu	<ul style="list-style-type: none"> • Small animal ventilator • Cautery • Temperature monitoring • Anesthesia system • Dissecting microscope • Visualsonics Vevo 2100 High Frequency Ultrasound* 	Emory-Children's Center, 2 nd Floor Lab	This core is a centralized resource specializing in survival surgery for rats and mice in addition to assistance with other USDA regulated animals such as rabbits, guinea pigs and piglets. The core director assists all investigators with development of IACUC protocols. Surgical services currently offered by the Core include pulmonary banding in rat and neonatal rabbit, aortic banding, myocardial infarction 5/6th nephrectomy for chronic kidney disease, liver-ischemia reperfusion and ultrasound guided injection ideally suited for targeted drug or cell therapy delivery. The Core also has available for use a Visualsonics Vevo 2100 High Frequency Ultrasound system that allows high resolution small animal ultrasound examinations for noninvasive measurement of in vivo structure and function. The Core Technical Director has been extensively trained in ultrasound techniques with many years' experience thereby increasing reliability and reproducibility of imaging data. Studies can either be conducted in an assisted fashion or investigators can reserve the equipment and utilize their own laboratory personnel.
Biomarkers Core	Lou Ann Brown, PhD lou.ann.brown@emory.edu 404-727-5739	Frank Harris fharris@emory.edu	Agilent gas chromatography/mass spectrometer and Waters high performance HPLC with fluorescence detector	Emory-Children's Center, 3 rd Floor Lab	This core analyzes markers of oxidative stress and markers of alcohol exposure. Speak to Scientific Director about other chromatography/mass spec assays available.
Cardiovascular Imaging Core (CIRC)	Ritu Sachdeva, MD sachdevar@kidsheart.com 404-785-CIRC	Joan Lipinski, RDCS, RDMS joan.Lipinski@choa.org	<ul style="list-style-type: none"> -Echocardiograms - Flow Doppler -3-D Imaging -Upright Bicycle -VO2 Analysis -Electrocardiogram -Cardiac MRI 	Outpatient Cardiac Services, 2 nd Floor, Tower 1	This core provides non-invasive cardiac support for investigators involved in clinical research involving infants, children and adolescents. The CIRC has dedicated space, equipment and staff to provide you with quality cardiovascular imaging data that is collected in a meticulous, systematic, detail-orientated manner. Because of our unique set-up, we are able to utilize state-of-the-art imaging modalities not typically seen in the clinical setting.
Flow Cytometry/Cell Sorting	David Archer darcher@emory.edu	Technical Director for Core: Aaron Rae aaron.j.rae@emory.edu Immunology services are overseen by Bridget Neary bridget.e.neary@emory.edu	<ul style="list-style-type: none"> • BD FACS Canto II Flow Cytometer - Lab E-362, HSRB • BD LSRII Flow Cytometer - Lab E-362, HSRB • BD LSRII Flow Cytometer - Lab E-362, HSRB • BD FACS Aria II Cell Sorter - Lab E-362A, HSRB • Imagestream X Mark II - Lab E-362, HSRB • Luminex 100 Analyzer - Lab E-362, HSRB • CTL-ImmunoSpot-S6 Micro Analyzer (ELISPOT Reader) - E-480, HSRB 	Health Sciences Research Building, E362	<p>This core offers access to several state of the art analytical flow cytometers and Luminex as well as high-speed cell sorting. We also offer training as well as expert help to enable our users to improve the quality and scope of their research.</p> <p>The facility provides flow cytometric analyzers and Luminex for the following applications:</p> <ul style="list-style-type: none"> • Immunophenotyping • Cell Cycle • Ploidy • Mitochondrial Potential • Apoptosis • PhosFlow • Live/Dead • Cell Proliferation • Oxidative Burst • Cytokine levels in serum and plasma • Gene and protein expression in cells and body fluids

Specialized Research Equipment/Service Cores

CORE	SCIENTIFIC DIRECTOR	TECHNICAL DIRECTOR/ CONTACT	EQUIPMENT	LOCATION	SERVICES
Medical Imaging Resources	<p>Radiologists at Children's are board certified with additional training in pediatric imaging and are available for consultation upon request.</p> <p>This operation also includes physicists with imaging expertise and other staff experts.</p>	<p>Erica Riedesel, MD Erica.Riedesel@choa.org</p>	<ul style="list-style-type: none"> • Access to clinical CT (4), PET (1), Bone Densitometry (2), Fluoroscopy (8), Nuclear Medicine (4), Ultrasound (9) and X-ray. • Access to 6 clinical MRI scanners including a 1.0T intraoperative, 1.5T and 3T systems. • Access to 2 fMRI systems. • Sedation Services • Access to radiology investigators specializing in radiology, neuroradiology and interventional radiology. • Access to MRI physicists (3). • Access to research professionals including administrators and research coordinators. • Administrative services including scheduling, archival of images 		<p>We provide a cross-disciplinary scientific, administrative, and educational home for imaging science through the Emory Center for Systems Imaging (CSI) and the Pediatric Imaging Research Core (PIRC) at Children's Healthcare of Atlanta.</p> <p>Inpatient Imaging Resources</p> <p>Outpatient Imaging Resources</p>
Children's Clinical & Translational Discovery Core	<p>Chris Porter, MD chris.porter@emory.edu</p>	<p>Mimi Le uyen.quynh.nguyen.le@emory.edu</p>	<p>Freezers (-80, LN2)</p>	<p>Health Sciences Research Building, E264</p>	<p>New Biological Samples</p> <ul style="list-style-type: none"> • Collection • Processing • Storage in a variety of storage media and freezers, including liquid nitrogen and -80 degree freezers. Monitoring systems ensure 24/7 specimen integrity. • Distribution - Specimens are tracked electronically via the Nautilus LIMS System. <p>Samples Available for Withdrawal</p> <ul style="list-style-type: none"> • PBMCs, plasma, whole blood, DNA, and urine from pediatric patients with immune-mediated disorders, solid organ transplant recipients and/or patients with end-stage organ disease who are awaiting organ transplant • Blood and urine from living kidney donors and healthy controls with renal diagnoses of rejection, stable function or viremia • Clinical data also can be made available upon request.

Partnership Cores

CORE	SCIENTIFIC DIRECTORS	EQUIPMENT	LOCATION	SERVICES
Integrated Cell Imaging Core	Adam Marcus, PhD Director, ICI aimarcu@emory.edu Laura Fox-Goharion Associate Director for Research Projects, ICI laura.fox-goharion@emory.edu 404-969-CORE April Reedy April.reedy@emory.edu	The rates for the microscopes included in this effort can be found at: http://www.cores.emory.edu/ici/documents/ICI%20Fees-Pediatrics%2020171.pdf . Pediatric researchers will benefit from a 40% subsidy when using any of the ICI equipment and technologies. ICI also provides expert consultation, training, and assistance on all technologies. More information on the microscopes and services available, locations, and how to become a user is available at http://www.cores.emory.edu/eigc/	A partnership facilitated by the Emory School of Medicine and includes the Pediatric Research Alliance Cellular Imaging Core along with other cellular imaging sites on campus including Winship Cancer Institute, Emory NINDS Neuroscience Core Facilities (ENNCF), and the Department of Physiology	This core provides training and access to advanced cellular imaging systems, including confocal and TIRF microscopy. For more information: http://www.pedsresearch.org/research/cores/integrated-cellular-imaging-core/overview/
Genetics/Genomics Core Resources	The Emory Integrated Genomics Core (EIGC): EIGC@emory.edu Emory Genetics Laboratory (EGL): dohginfo@emory.edu or domglab@emory.edu	The EIGC is a full-service genomics and computational facility offering Emory researchers the ability to use the latest technologies and methods of analysis in their research. We offer next-generation sequencing, high density microarray services, targeted enrichment, single nucleotide polymorphism (SNP) genotyping, and cutting-edge computational services built around our custom Galaxy server and Emory University's high performance computing and storage infrastructure. Please go to this link to learn more: Emory Integrated Genomics Core . Emory Genetics Laboratory (EGL) is a “one-stop shop” for genetic testing. Its molecular genetics, biochemical genetics, and cytogenetics laboratories are fully integrated and offer one of the most comprehensive test menus available – more than 900 genetic tests are available for clinicians and researchers. As part of Emory University School of Medicine, EGL remains on the forefront of the latest technologies, including exome sequencing, next generation sequencing, whole genomic and targeted microarrays, and more. ABMG-accredited laboratory directors and NSGC-certified laboratory genetic counselors are available to all ordering clinicians and researchers. For more information, please visit Emory Genetics Laboratory .		

Funding Opportunities:

Funding Opportunity	Funding Limit	Funding Term	Deadline	Eligibility	Post Award Expectations	Additional Information
Research Center Pilot Grants (including Emory & GA Tech based centers)	\$50,000 (some GA Tech are \$60K)	12 months	Usually mid-winter; Emory-based are due roughly every other year and GA Tech-based offered every year	1. Must include a member of the center and/or member of Children's medical staff 2. GA Tech Pediatric Technology Center (PTC)--must also include member of GA Tech faculty	1. Must provide annual report specifying related publications, grant applications submitted and extramural funding received. 2. Must apply for extramural funding within one year of project conclusion date.	http://www.pedresearch.org/research/resource/funding/pilot-grant-programs
Imlay Innovation Fund <i>Intended solely to support collaborative activities and pediatric innovation and discovery efforts between Georgia Tech and Children's, focusing on practical steps that will lead to clinical impact as well as potential commercial opportunities.</i>	<p>Two types of projects are eligible for funding:</p> <p>1. Quick Wins: Quick Wins (QW) allows Children's clinicians and clinical administrative leaders to bring problems that impact care delivery to the attention of scientists and engineers at Georgia Tech to help develop innovative solutions. Successful projects have ranged from pediatric specific surgical device development in partnership with a surgeon and biomedical engineer to improvement of workflow in a busy outpatient clinic in partnership with physicians, clinical administrative leadership, architectural researchers, and industrial engineers. Quick Wins supports projects that can be accomplished in 12-18 months and can be quickly translated into practice. It is possible, but not guaranteed, that a Quick Wins award could help to position an investigator for a successful Innovation Investment application (described below) within the 2 years following the QW award. Quick Wins awards will be funded up to \$125K.</p> <p>2. Innovation Investment: Innovation Investment is intended to help bridge the funding gap that often blocks the next phase of implementation or commercialization after initial proof of concept. Innovation Investment awards should allow investigators to collect much-needed data, complete further proof-of-concept studies, or to produce prototypes for testing in order to effectively compete for extramural or investment funding. Innovation Investment projects will typically be funded for a one-year period. Applications for multi-year awards will be accepted only with prior approval, and can receive a total of no more than \$250K. An important part of the proposal is a potential for commercialization and/or implementation, as well as potential to positively impact child health.</p> <p>For more information: https://ptc.gatech.edu/imlay-innovation-fund-1</p>					

Additional Resources:

Research listserv:

Contact [Meredith.capasse @emory.edu](mailto:Meredith.capasse@emory.edu) to be added to this listserv used to disseminate all pediatric research related announcements including seminars, funding opportunities, such as the [BiRD \(Bringing in Research Dollars\)](#), and the Weekly PREP (*Pediatric Research Events and Programs*).

Website:

www.pedsresearch.org

This is the central resource for research seminar info, contacts, cores, calendars, and forms.

Emory Library Resources

- <http://www.healthlibrary.emory.edu/>
- Ask a librarian:
<http://health.library.emory.edu/about/contact/ask.php>

Scottish Rite and Egleston Library Resources

- [Christine Willis](#)
Clinical Information Librarian, Inman Medical Library at Children's at Egleston
404-785-1481
- [Kate Daniels](#)
Clinical Information Librarian at Scottish Rite
404-785-2157
- If you have access to [Careforce](#) — use the following link:
<http://careforceconnection/Departments/HumanResources/Learning%20Services/LibrarServices/Pages/Home.aspx>
- If you do not have access to Careforce -- use the following link: <https://www.choa.org/medical-professionals/physician-resources/medical-libraries>